

Iowa County, Iowa  
Iowa South Zone (1402)  
Horiz. Datum: NAD83(NSRS2007)  
Vert. Datum: NAVD 1988  
US Survey Feet  
**2008**

Point Name: **4245**

**Designation:** 2008-245 Iowa Co GPS Control Pt

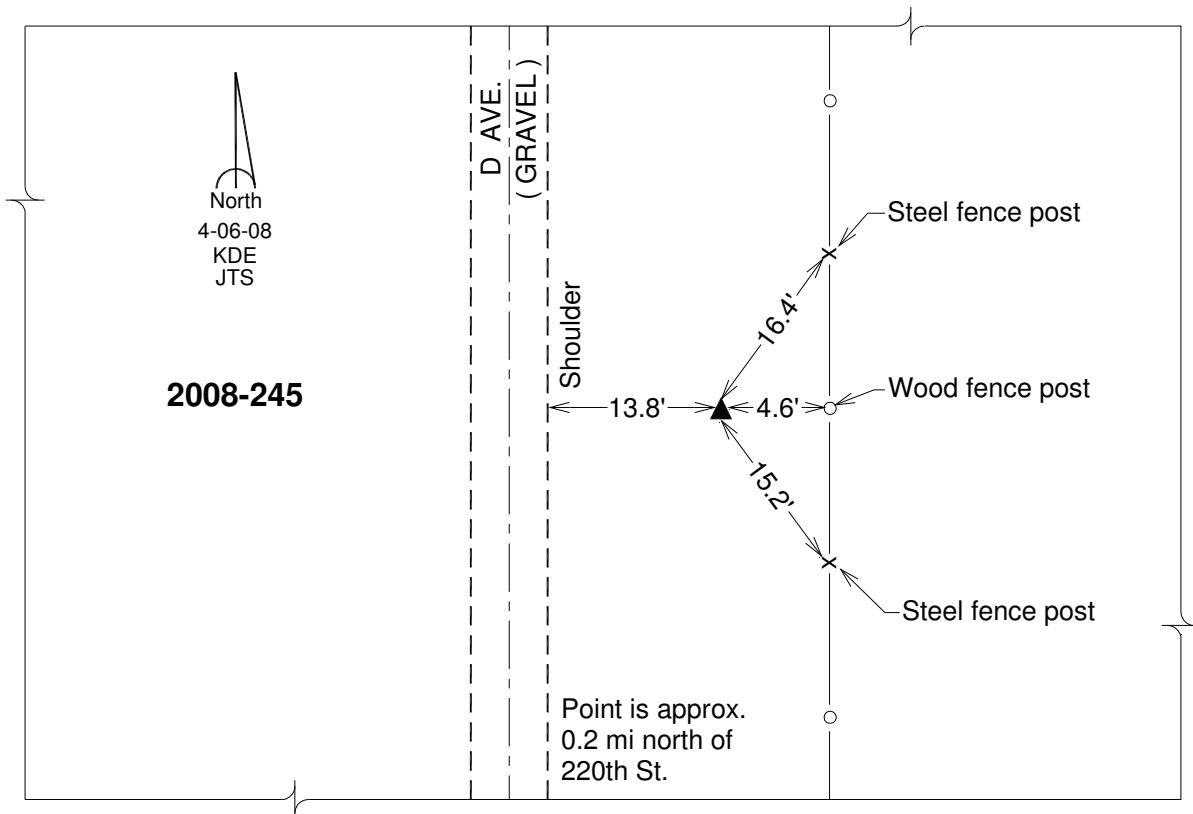
Northing: **618438.23**sft Easting: **1984257.41**sft

Orthometric Height: **914.81**sft Ellipsoid Height: **809.42**sft **Geoid03**

Latitude: **41°41'26.11307"N** Longitude: **92°14'27.80656"W**

Mapping Angle: **0°49'45"** Combination Scale Factor: **0.99994623**

**Monument Type:** Berntsen 3/4" Top Security Rod Monument with a 2-1/2" dia. domed survey cap and permanent magnet encased in a white PVC pipe with a NGS style alum. access cover.



*This document was prepared by DCI and GBC for use by Iowa County, Iowa.*