

Iowa County, Iowa
 Iowa South Zone (1402)
 Horiz. Datum: NAD83(NSRS2007)
 Vert. Datum: NAVD 1988
 US Survey Feet
2008

Point Name: **4246**

Designation: 2008-246 Iowa Co GPS Control Pt

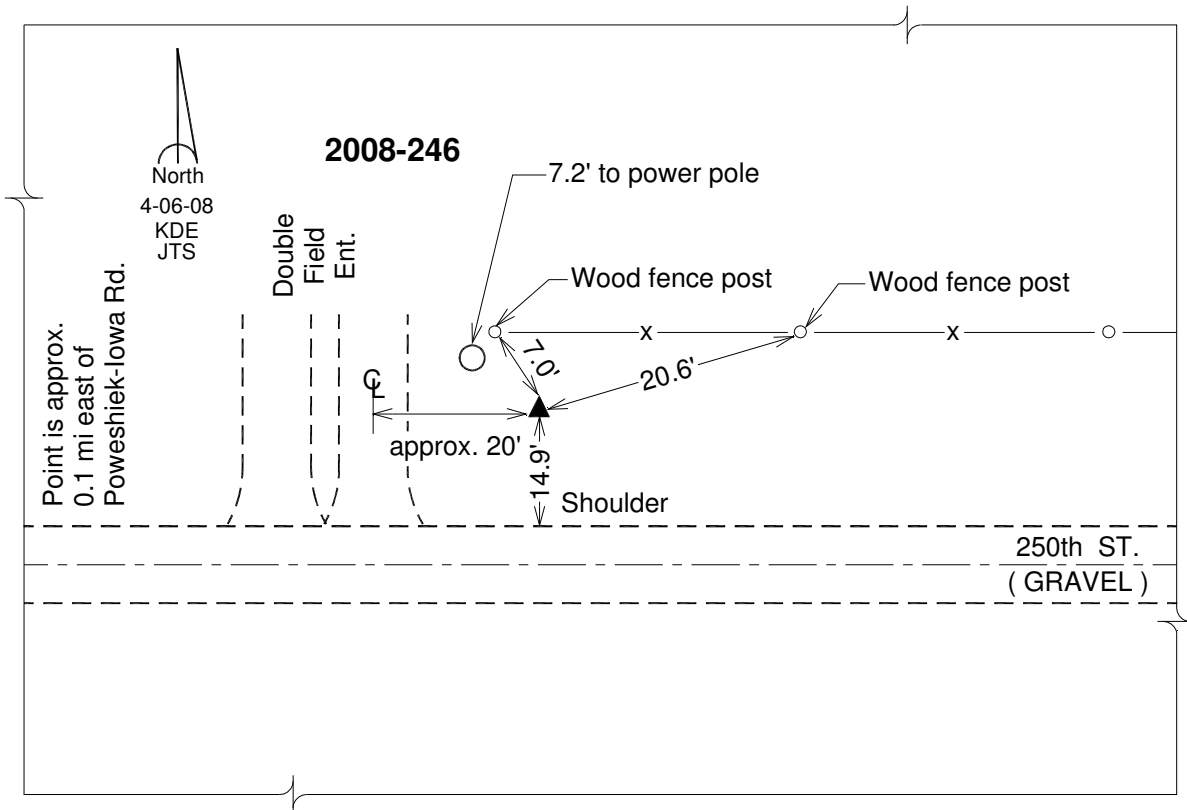
Northing: **601689.46sft** Easting: **1969266.50sft**

Orthometric Height: **886.78sft** Ellipsoid Height: **781.36sft** **Geoid03**

Latitude: **41°38'42.75360"N** Longitude: **92°17'48.43079"W**

Mapping Angle: **0°47'33"** Combination Scale Factor: **0.99994111**

Monument Type: Berntsen 3/4" Top Security Rod Monument with a 2-1/2" dia. domed survey cap and permanent magnet encased in a white PVC pipe with a NGS style alum. access cover.



This document was prepared by DCI and GBC for use by Iowa County, Iowa.