

Iowa County, Iowa
 Iowa South Zone (1402)
 Horiz. Datum: NAD83(NSRS2007)
 Vert. Datum: NAVD 1988
 US Survey Feet
2008

Point Name: **4247**

Designation: 2008-247 Iowa Co GPS Control Pt

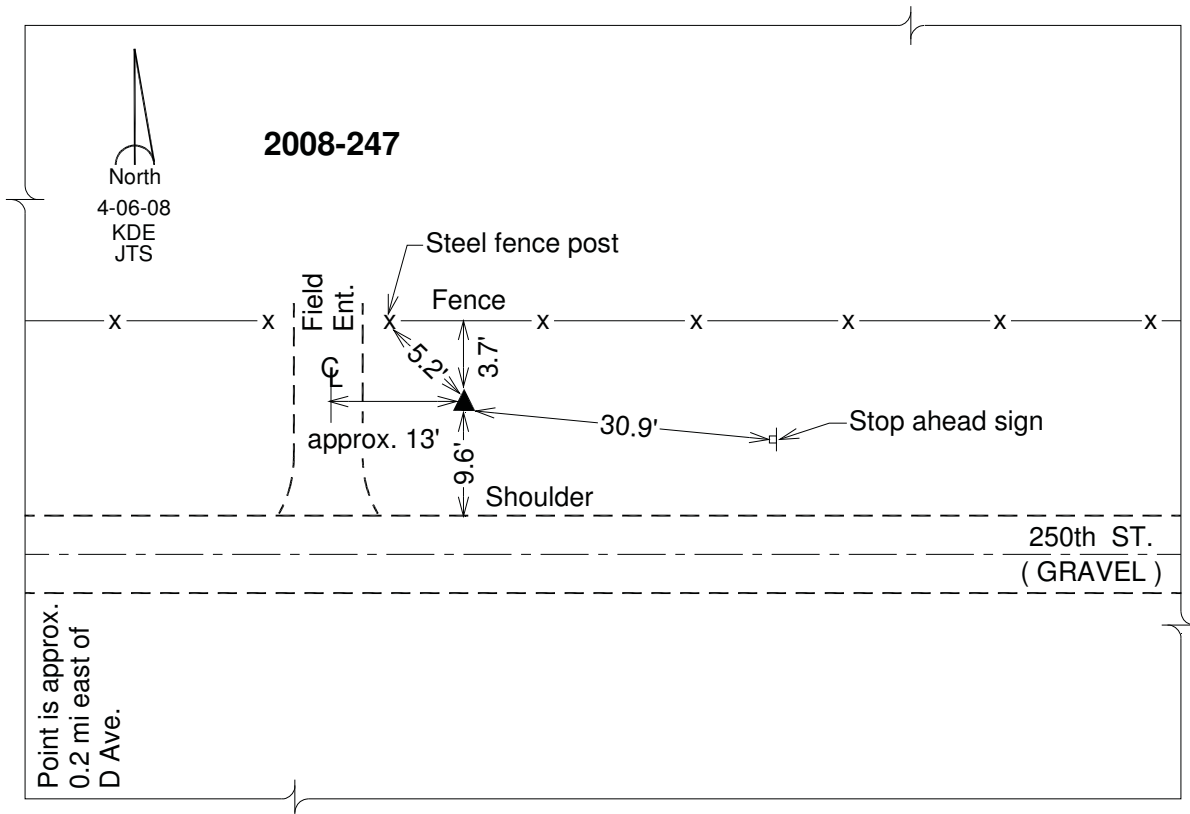
Northing: **601810.60sft** Easting: **1985261.33sft**

Orthometric Height: **916.72sft** Ellipsoid Height: **811.22sft** **Geoid03**

Latitude: **41°38'41.71139"N** Longitude: **92°14'17.75468"W**

Mapping Angle: **0°49'52"** Combination Scale Factor: **0.99993965**

Monument Type: Berntsen 3/4" Top Security Rod Monument with a 2-1/2" dia. domed survey cap and permanent magnet encased in a white PVC pipe with a NGS style alum. access cover.



This document was prepared by DCI and GBC for use by Iowa County, Iowa.