

**Iowa County, Iowa**  
 Iowa South Zone (1402)  
 Horiz. Datum: NAD83(NSRS2007)  
 Vert. Datum: NAVD 1988  
 US Survey Feet  
**2008**

Point Name: **4249**

**Designation:** 2008-249 Iowa Co GPS Control Pt

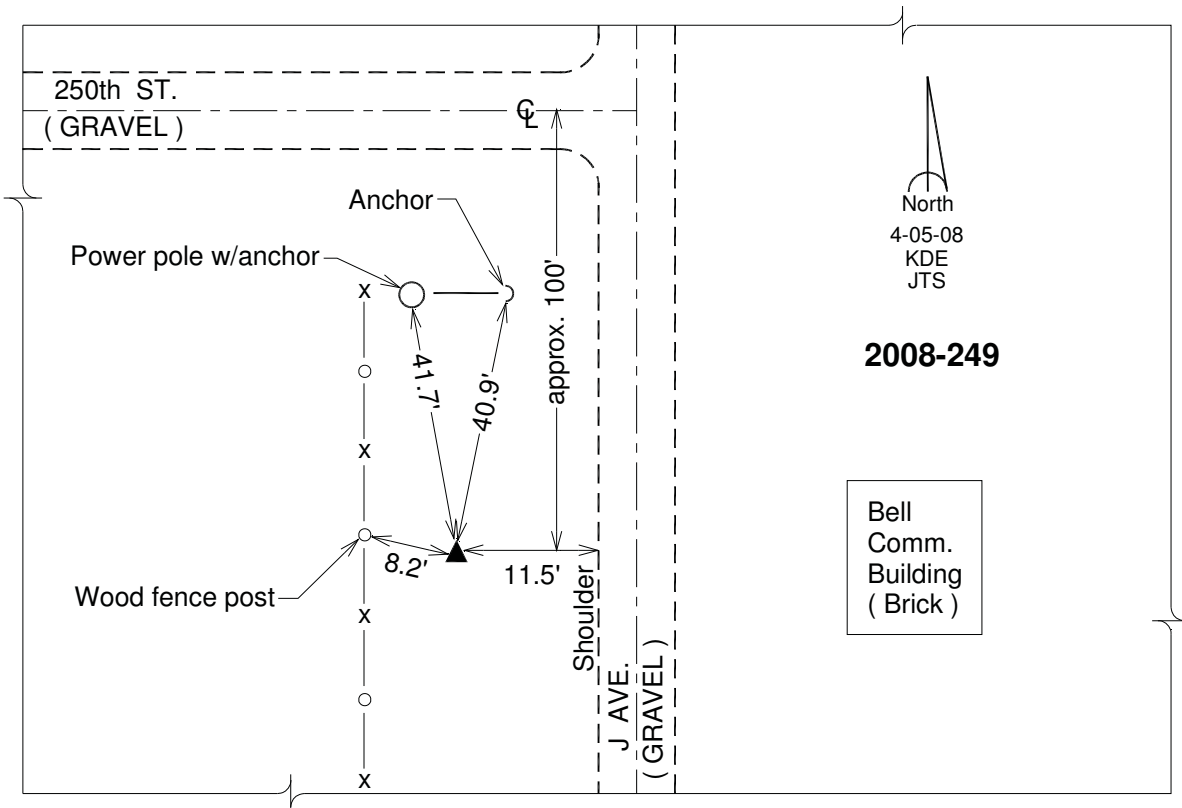
Northing: **601949.61**sft    Easting: **2016274.37**sft

Orthometric Height: **904.48**sft    Ellipsoid Height: **798.75**sft    **Geoid03**

Latitude: **41°38'38.44038"N**    Longitude: **92°07'29.29152"W**

Mapping Angle: **0°54'21"**    Combination Scale Factor: **0.99994012**

**Monument Type:** Berntsen 3/4" Top Security Rod Monument with a 2-1/2" dia. domed survey cap and permanent magnet encased in a white PVC pipe with a NGS style alum. access cover.



*This document was prepared by DCI and GBC for use by Iowa County, Iowa.*