

Iowa County, Iowa
 Iowa South Zone (1402)
 Horiz. Datum: NAD83(NSRS2007)
 Vert. Datum: NAVD 1988
 US Survey Feet
2008

Point Name: **4252**

Designation: 2008-252 Iowa Co GPS Control Pt

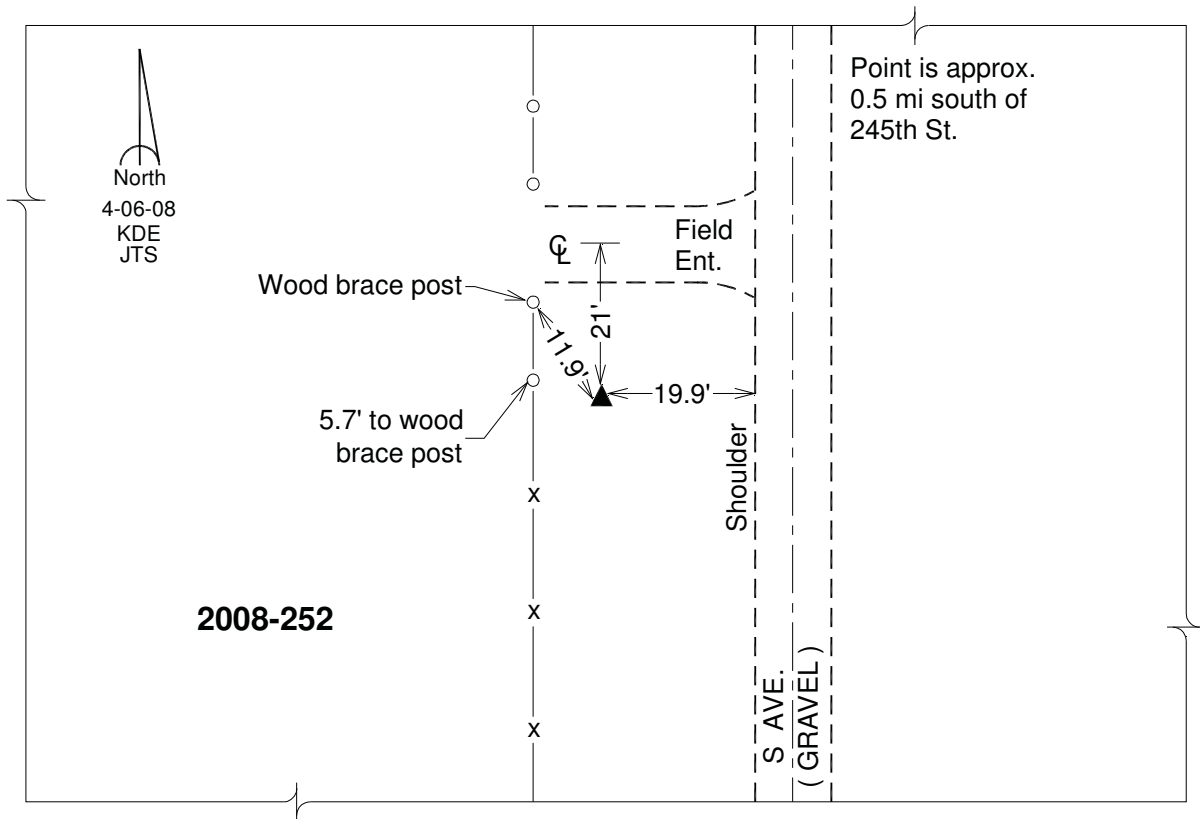
Northing: **603050.37**sft Easting: **2064217.01**sft

Orthometric Height: **858.86**sft Ellipsoid Height: **752.71**sft **Geoid03**

Latitude: **41°38'41.34818"N** Longitude: **91°56'57.67024"W**

Mapping Angle: **1°01'17"** Combination Scale Factor: **0.99994243**

Monument Type: Berntsen 3/4" Top Security Rod Monument with a 2-1/2" dia. domed survey cap and permanent magnet encased in a white PVC pipe with a NGS style alum. access cover.



This document was prepared by DCI and GBC for use by Iowa County, Iowa.