

Iowa County, Iowa  
Iowa South Zone (1402)  
Horiz. Datum: NAD83(NSRS2007)  
Vert. Datum: NAVD 1988  
US Survey Feet  
**2008**

Point Name: **4253**

**Designation:** 2008-253 Iowa Co GPS Control Pt

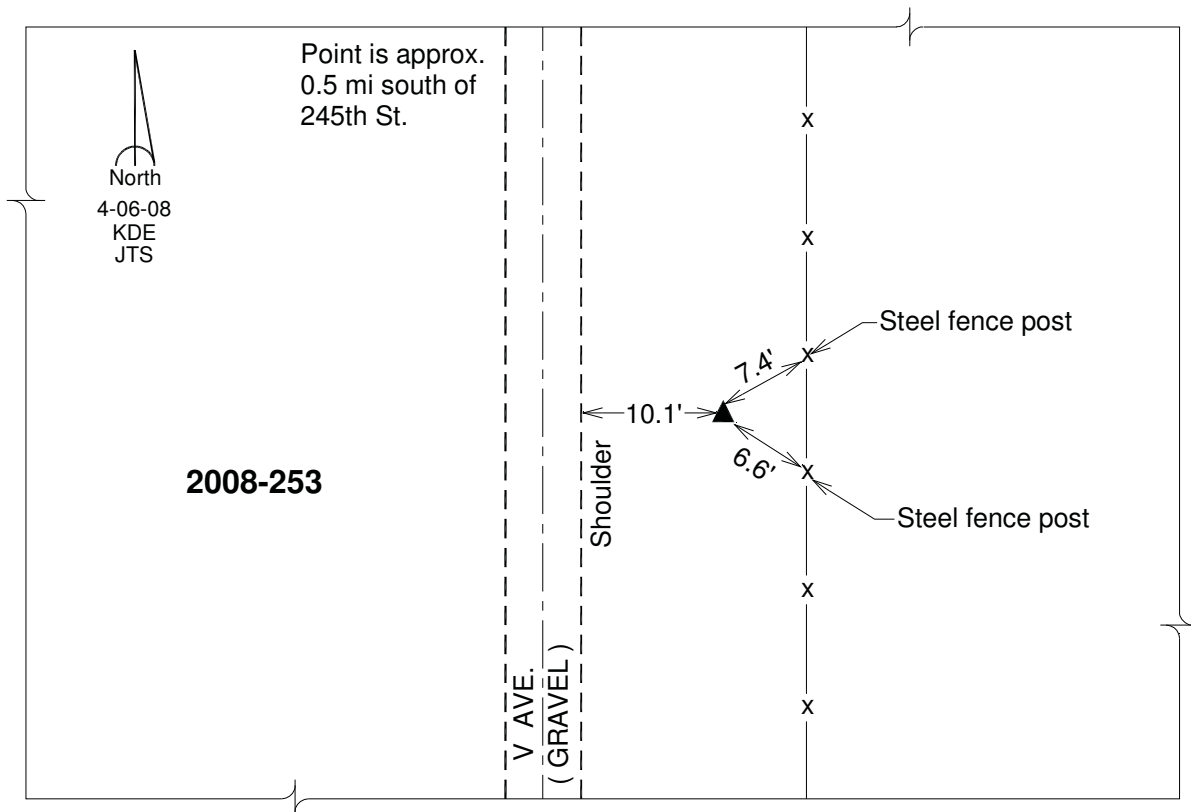
Northing: **603629.23sft** Easting: **2080140.15sft**

Orthometric Height: **828.24sft** Ellipsoid Height: **721.97sft** **Geoid03**

Latitude: **41°38'44.20917"N** Longitude: **91°53'27.83546"W**

Mapping Angle: **1°03'35"** Combination Scale Factor: **0.99994400**

**Monument Type:** Berntsen 3/4" Top Security Rod Monument with a 2-1/2" dia. domed survey cap and permanent magnet encased in a white PVC pipe with a NGS style alum. access cover.



*This document was prepared by DCI and GBC for use by Iowa County, Iowa.*