

Iowa County, Iowa  
Iowa South Zone (1402)  
Horiz. Datum: NAD83(NSRS2007)  
Vert. Datum: NAVD 1988  
US Survey Feet  
2008

Point Name: **4254**

**Designation:** 2008-254 Iowa Co GPS Control Pt

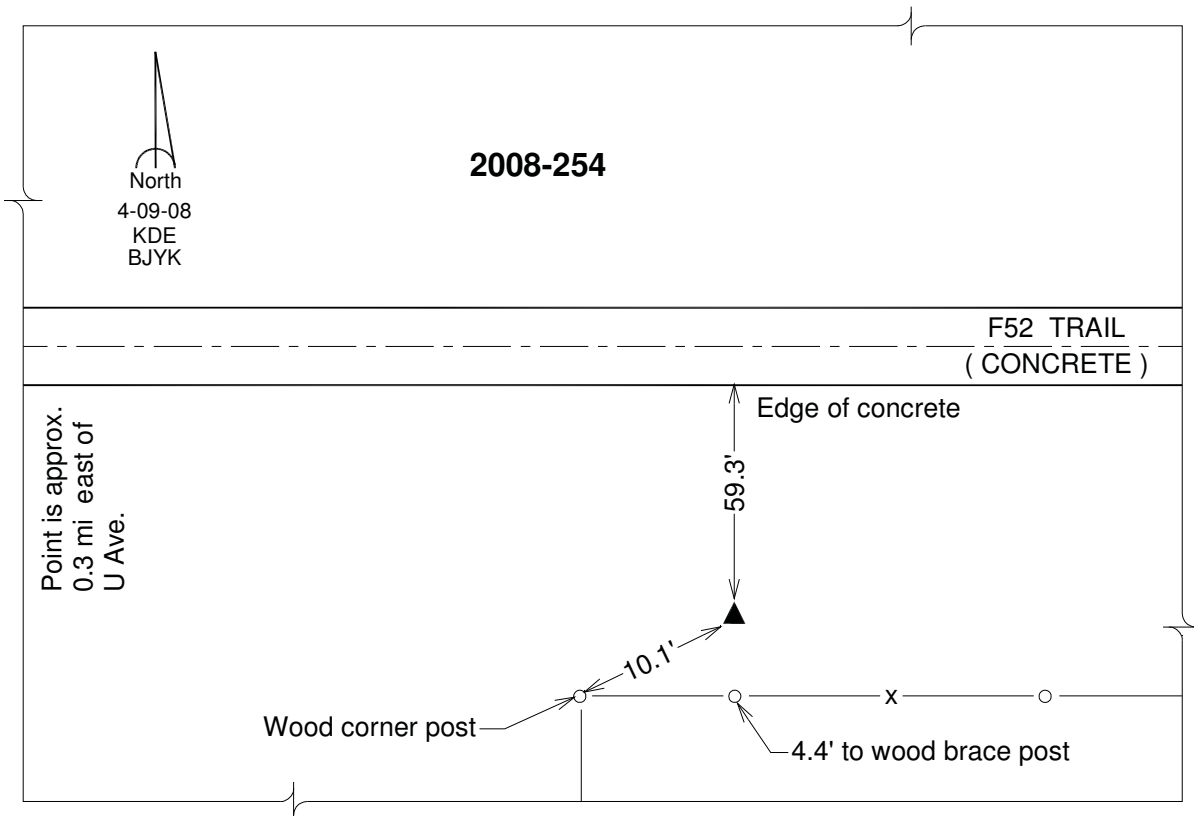
Northing: **583800.19**sft Easting: **2078205.63**sft

Orthometric Height: **823.76**sft Ellipsoid Height: **717.28**sft **Geoid03**

Latitude: **41°35'28.68797"N** Longitude: **91°53'58.11728"W**

Mapping Angle: **1°03'15"** Combination Scale Factor: **0.99993732**

**Monument Type:** Berntsen 3/4" Top Security Rod Monument with a 2-1/2" dia. domed survey cap and permanent magnet encased in a white PVC pipe with a NGS style alum. access cover.



*This document was prepared by DCI and GBC for use by Iowa County, Iowa.*