

Iowa County, Iowa  
Iowa South Zone (1402)  
Horiz. Datum: NAD83(NSRS2007)  
Vert. Datum: NAVD 1988  
US Survey Feet  
**2008**

Point Name: **4255**

**Designation:** 2008-255 Iowa Co GPS Control Pt

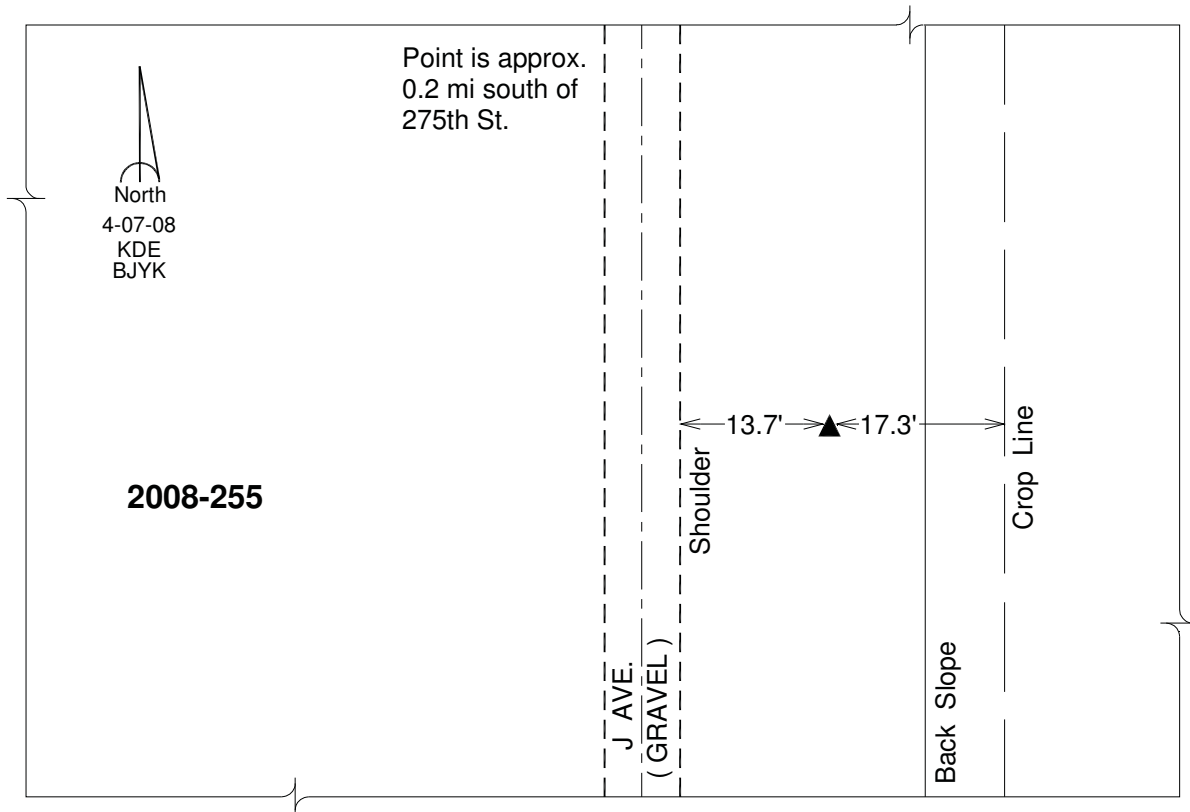
Northing: **587955.01**sft Easting: **2016795.64**sft

Orthometric Height: **733.90**sft Ellipsoid Height: **628.04**sft **Geoid03**

Latitude: **41°36'20.11253"N** Longitude: **92°07'25.34309"W**

Mapping Angle: **0°54'24"** Combination Scale Factor: **0.99994331**

**Monument Type:** Berntsen 3/4" Top Security Rod Monument with a 2-1/2" dia. domed survey cap and permanent magnet encased in a white PVC pipe with a NGS style alum. access cover.



*This document was prepared by DCI and GBC for use by Iowa County, Iowa.*