

**Iowa County, Iowa**  
 Iowa South Zone (1402)  
 Horiz. Datum: NAD83(NSRS2007)  
 Vert. Datum: NAVD 1988  
 US Survey Feet  
**2008**

Point Name: **4256**

**Designation:** 2008-256 Iowa Co GPS Control Pt

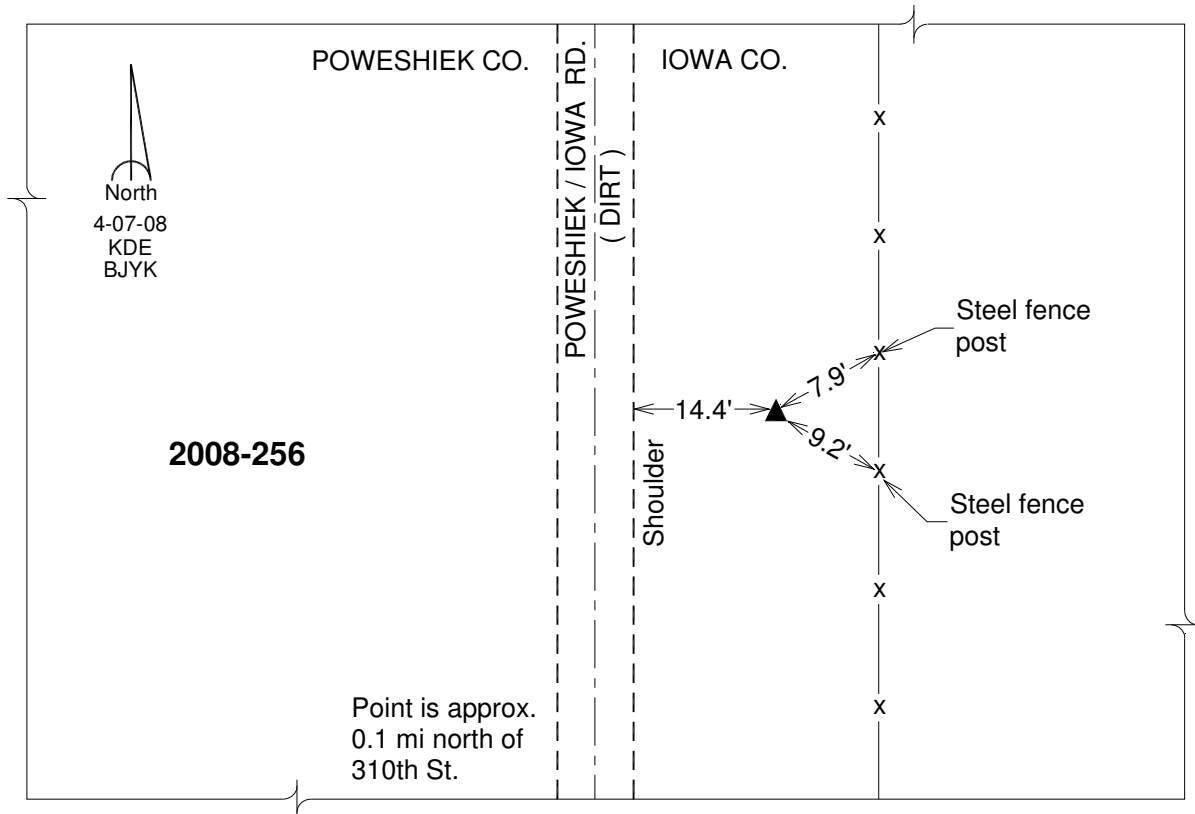
Northing: **568513.29**sft    Easting: **1969524.45**sft

Orthometric Height: **848.94**sft    Ellipsoid Height: **743.45**sft    **Geoid03**

Latitude: **41°33'14.97365"N**                      Longitude: **92°17'51.07435"W**

Mapping Angle: **0°47'31"**                      Combination Scale Factor: **0.99993187**

**Monument Type:** Berntsen 3/4" Top Security Rod Monument with a 2-1/2" dia. domed survey cap and permanent magnet encased in a white PVC pipe with a NGS style alum. access cover.



*This document was prepared by DCI and GBC for use by Iowa County, Iowa.*