

Iowa County, Iowa
Iowa South Zone (1402)
Horiz. Datum: NAD83(NSRS2007)
Vert. Datum: NAVD 1988
US Survey Feet
2008

Point Name: **4260**

Designation: 2008-260 Iowa Co GPS Control Pt

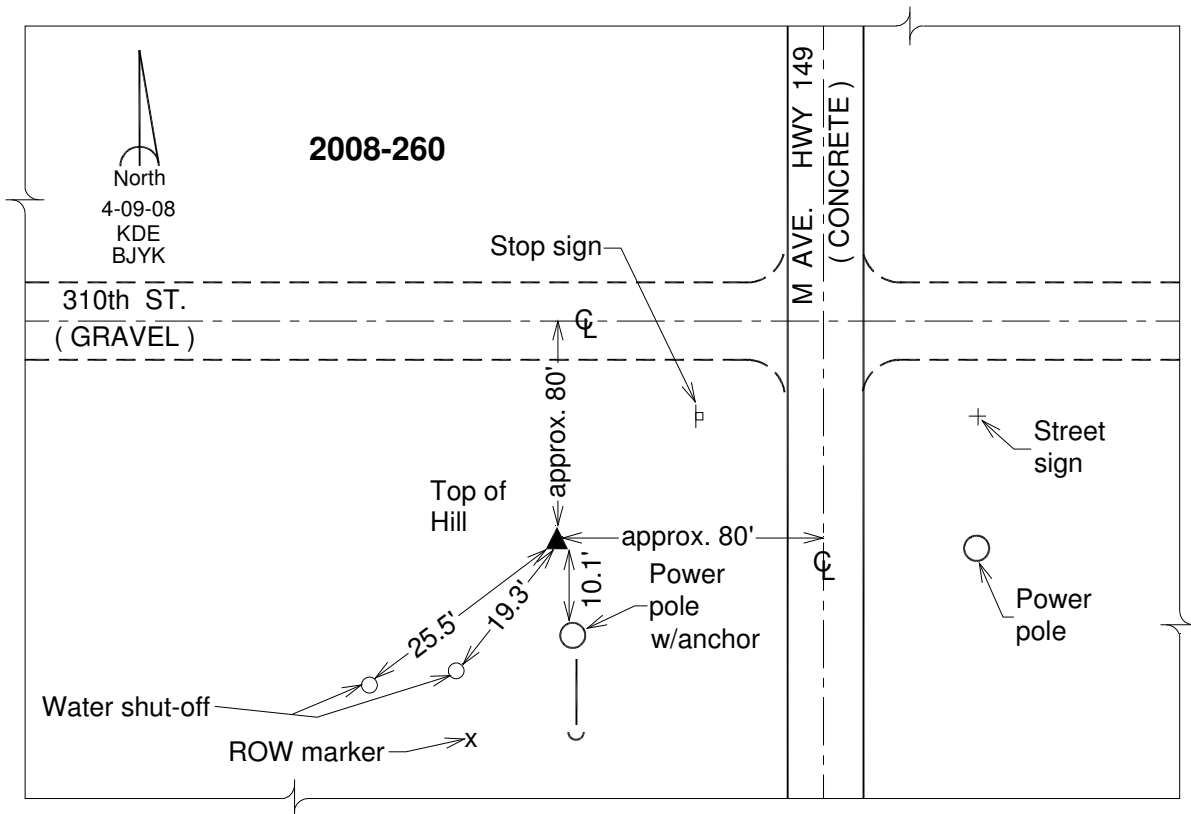
Northing: **569268.15**sft Easting: **2033062.42**sft

Orthometric Height: **823.86**sft Ellipsoid Height: **717.66**sft **Geoid03**

Latitude: **41°33'12.91521"N** Longitude: **92°03'55.30188"W**

Mapping Angle: **0°56'42"** Combination Scale Factor: **0.99993304**

Monument Type: Berntsen 3/4" Top Security Rod Monument with a 2-1/2" dia. domed survey cap and permanent magnet encased in a white PVC pipe with a NGS style alum. access cover.



This document was prepared by DCI and GBC for use by Iowa County, Iowa.