

Iowa County, Iowa
 Iowa South Zone (1402)
 Horiz. Datum: NAD83(NSRS2007)
 Vert. Datum: NAVD 1988
 US Survey Feet
2008

Point Name: **4262**

Designation: 2008-262 Iowa Co GPS Control Pt

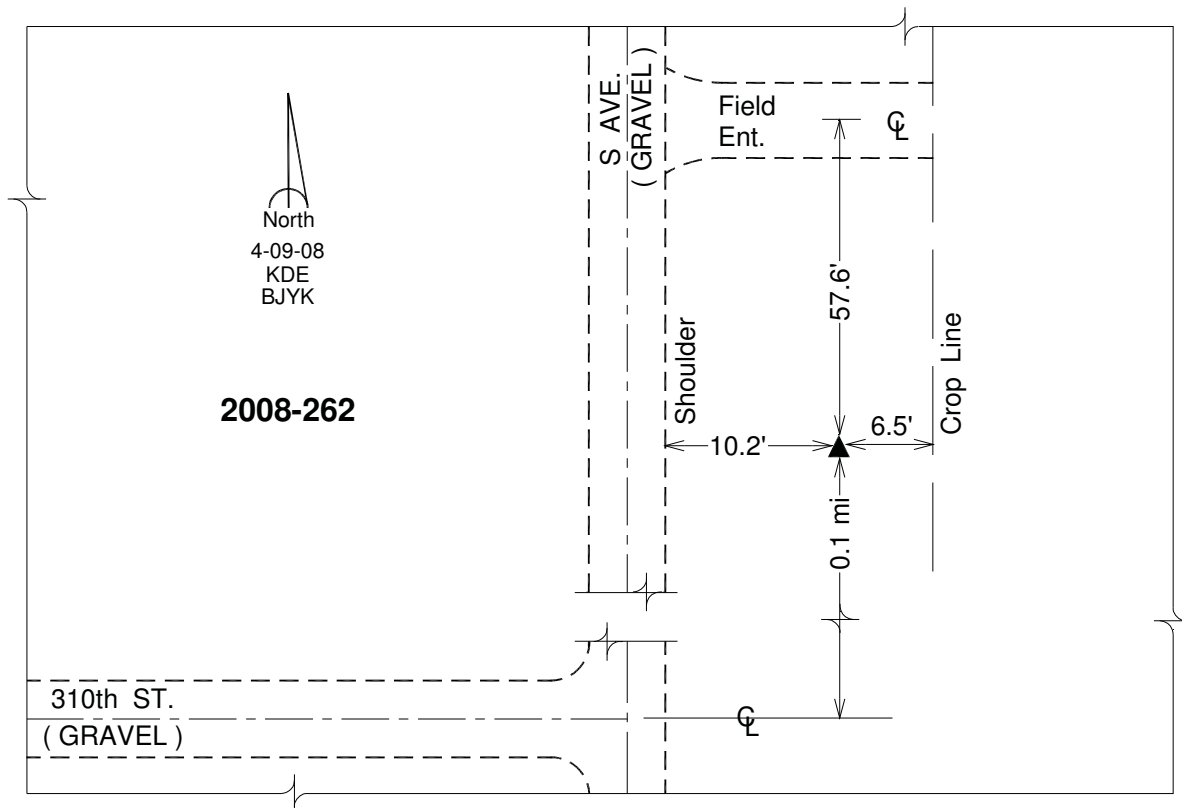
Northing: **570588.73sft** Easting: **2065689.74sft**

Orthometric Height: **841.80sft** Ellipsoid Height: **735.30sft** **Geoid03**

Latitude: **41 °33'20.42306"N** Longitude: **91 °56'45.91328"W**

Mapping Angle: **1 °01'25"** Combination Scale Factor: **0.99993242**

Monument Type: Berntsen 3/4" Top Security Rod Monument with a 2-1/2" dia. domed survey cap and permanent magnet encased in a white PVC pipe with a NGS style alum. access cover.



This document was prepared by DCI and GBC for use by Iowa County, Iowa.