

Iowa County, Iowa
 Iowa South Zone (1402)
 Horiz. Datum: NAD83(NSRS2007)
 Vert. Datum: NAVD 1988
 US Survey Feet
2008

Point Name: **4264**

Designation: 2008-264 Iowa Co GPS Control Pt

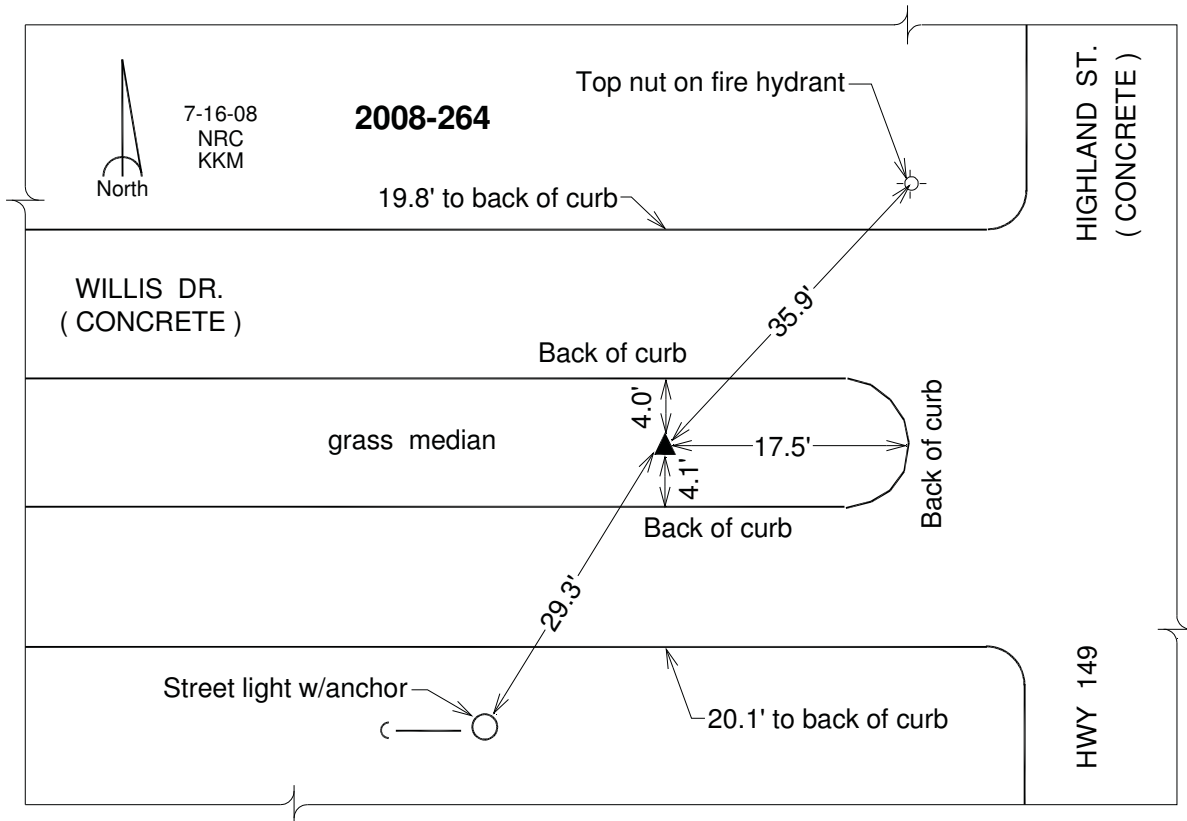
Northing: **614832.53**sft Easting: **2048016.40**sft

Orthometric Height: **836.76**sft Ellipsoid Height: **730.88**sft **Geoid03**

Latitude: **41°40'40.53373"N** Longitude: **92°00'28.36119"W**

Mapping Angle: **0°58'58"** Combination Scale Factor: **0.99994811**

Monument Type: Berntsen 3/4" Top Security Rod Monument with a 2-1/2" dia. domed survey cap and permanent magnet encased in a white PVC pipe with a NGS style alum. access cover.



This document was prepared by DCI and GBC for use by Iowa County, Iowa.