

Iowa County, Iowa
Iowa South Zone (1402)
Horiz. Datum: NAD83(NSRS2007)
Vert. Datum: NAVD 1988
US Survey Feet
2008

Point Name: **4307**

Designation: USGS 3rd order vertical control station "No. 48"

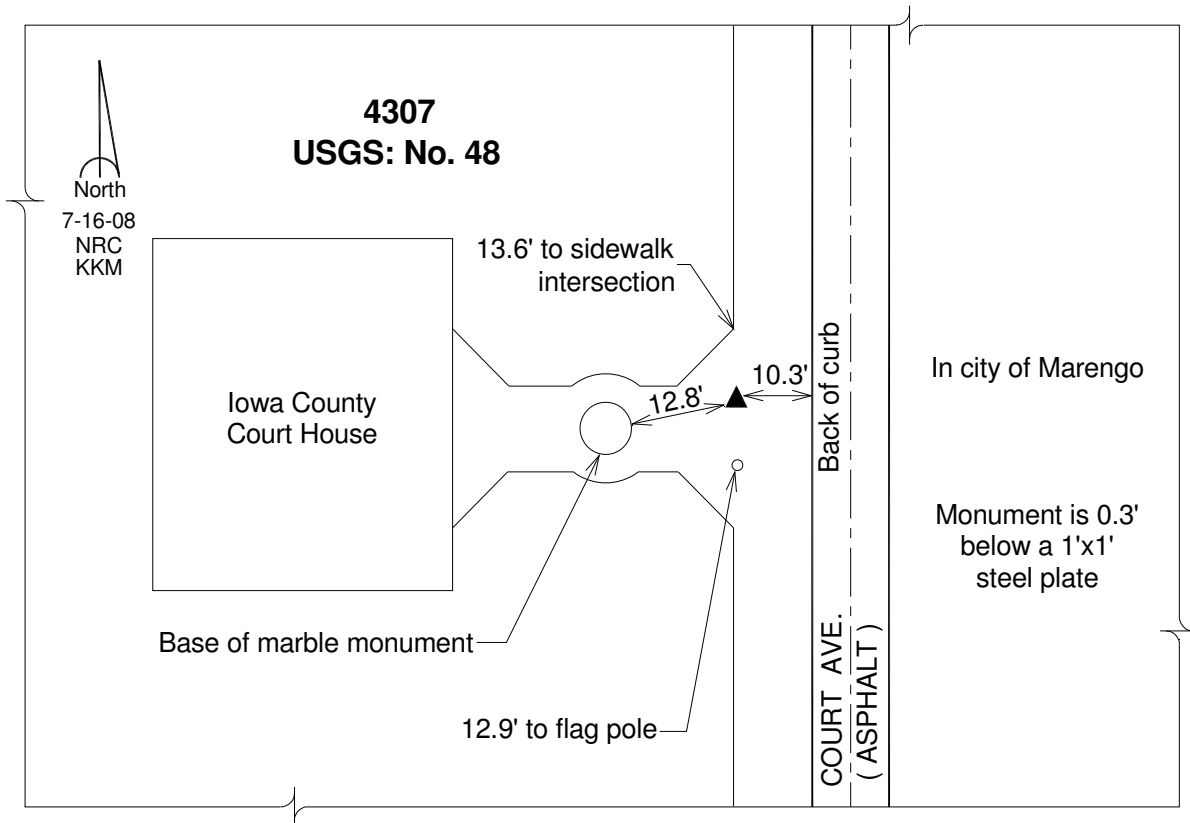
Northing: **658360.50**sft Easting: **2030262.92**sft

Orthometric Height: **737.49**sft Ellipsoid Height: **632.35**sft **Geoid03**

Latitude: **41°47'53.45038"N** Longitude: **92°04'12.85787"W**

Mapping Angle: **0°56'30"** Combination Scale Factor: **0.99997250**

Monument Type: Station is a standard bench mark disk stamped "No. 48" and set in the top of a concrete post approx. 0.3ft deep.



This document was prepared by DCI and GBC for use by Iowa County, Iowa.