

**Iowa County, Iowa**  
 Iowa South Zone (1402)  
 Horiz. Datum: NAD83(NSRS2007)  
 Vert. Datum: NAVD 1988  
 US Survey Feet  
**2008**

Point Name: **4309**

**Designation:** USCG 3rd order vertical control station "No. 48-14"

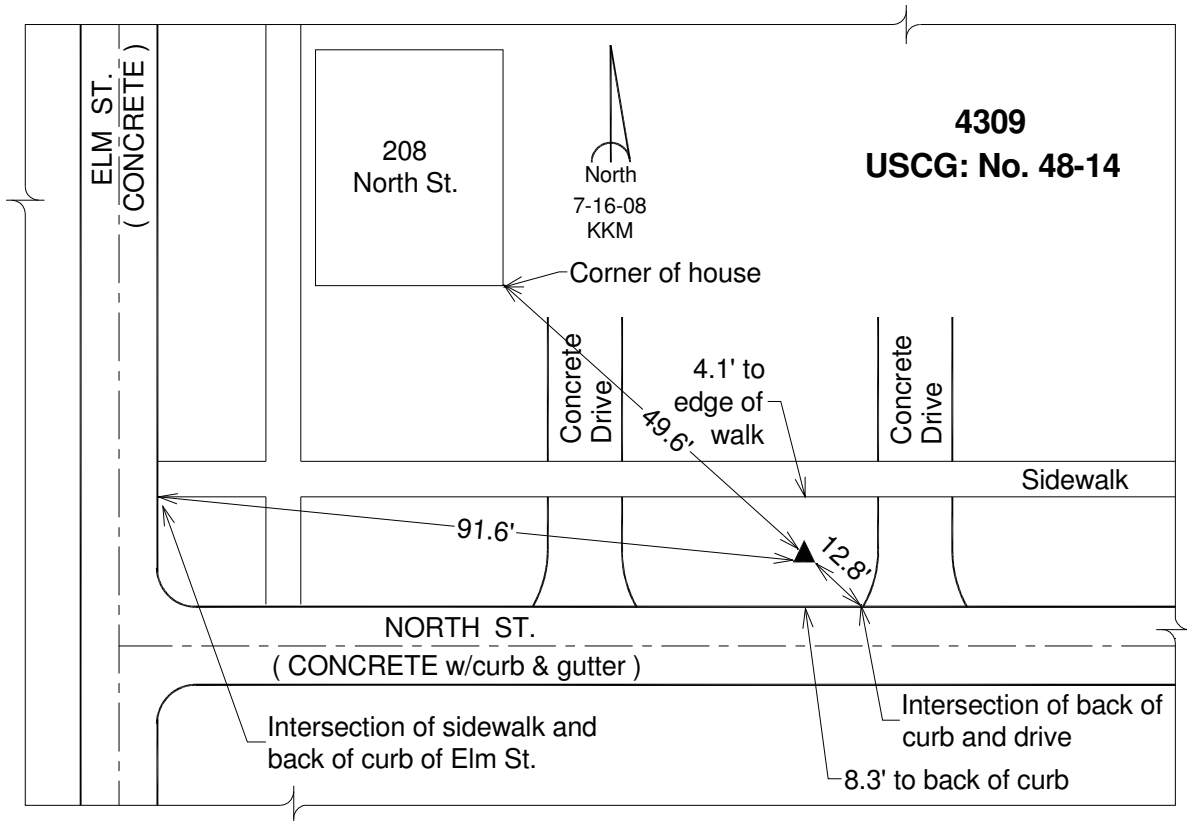
Northing: **610020.32sft**    Easting: **2047608.44sft**

Orthometric Height: **785.38sft**    Ellipsoid Height: **679.43sft**    **Geoid03**

Latitude: **41°39'53.06685"N**    Longitude: **92°00'34.82300"W**

Mapping Angle: **0°58'54"**    Combination Scale Factor: **0.99994868**

**Monument Type:** Station is a standard bench mark disk stamped "No. 48-14" and set in the top of a concrete post.



*This document was prepared by DCI and GBC for use by Iowa County, Iowa.*