

Iowa County, Iowa
Iowa South Zone (1402)
Horiz. Datum: NAD83(NSRS2007)
Vert. Datum: NAVD 1988
US Survey Feet
2008

Point Name: **1**

Designation: 92-01 Johnson Co GPS Control Pt (Set by ASI in 1992)

Northing: **682652.23sft** Easting: **2094886.39sft**

Orthometric Height: **780.83sft** Ellipsoid Height: **675.39sft** **Geoid03**

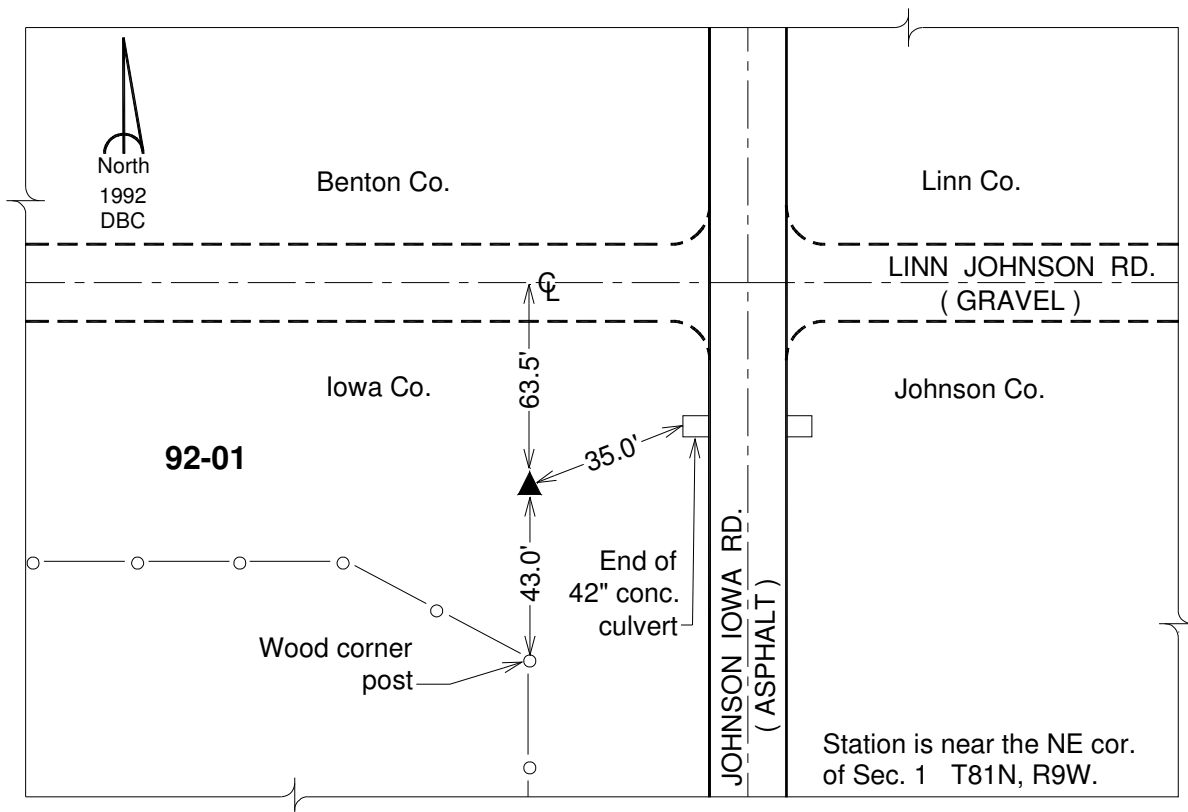
Latitude: **41°51'42.02407"N**

Longitude: **91°49'53.67708"W**

Mapping Angle: **1°05'56"**

Combination Scale Factor: **0.99998262**

Monument Type: 5/8" dia. driven aluminum rod with a 2-1/2" dia. aluminum cap and permanent magnet encased in a 6" dia. PVC pipe with an aluminum access cover.



This document was prepared by DCI and GBC for use by Iowa County, Iowa.