

Iowa County, Iowa  
Iowa South Zone (1402)  
Horiz. Datum: NAD83(NSRS2007)  
Vert. Datum: NAVD 1988  
US Survey Feet  
2008

Point Name: **14**

**Designation:** 92-14 Johnson Co GPS Control Pt (Set by ASI in 1992)

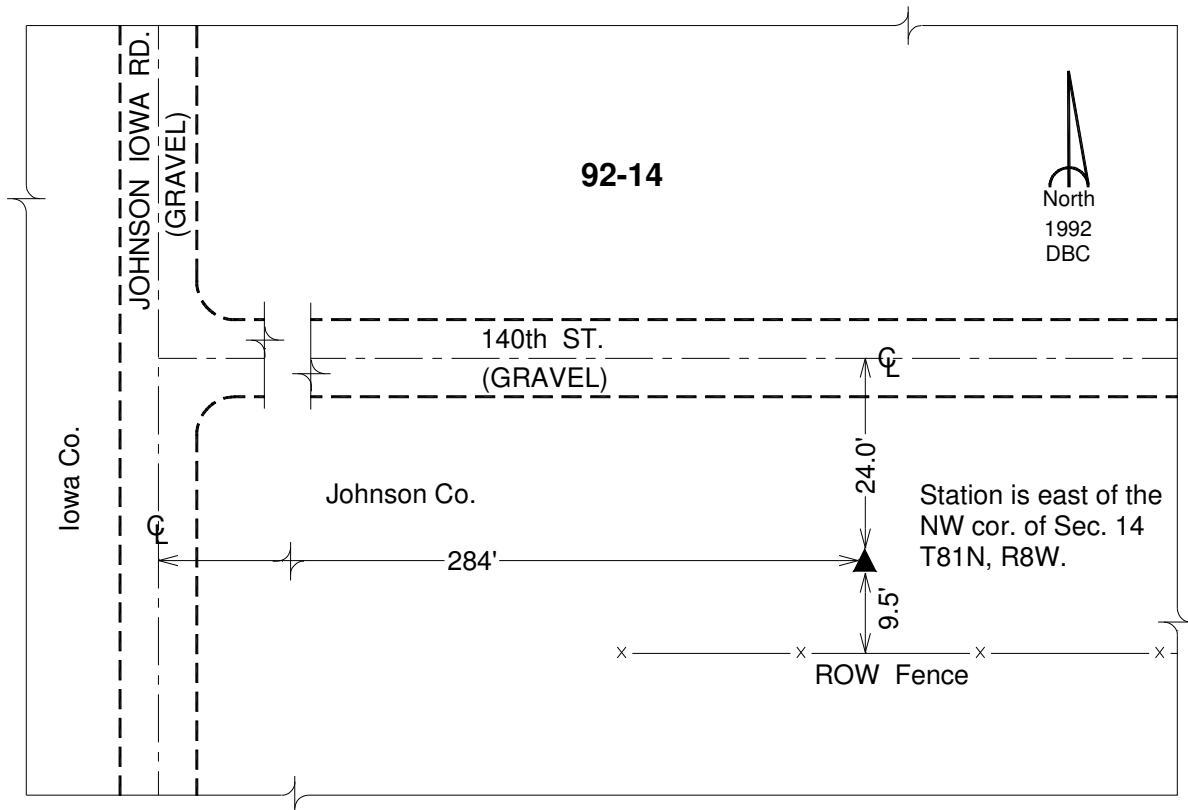
Northing: **672099.61**sft    Easting: **2095512.95**sft

Orthometric Height: **861.38**sft    Ellipsoid Height: **755.74**sft    **Geoid03**

Latitude: **41°49'57.67458"N**    Longitude: **91°49'48.07566"W**

Mapping Angle: **1°06'00"**    Combination Scale Factor: **0.99997308**

**Monument Type:** 5/8" dia. driven aluminum rod with a 2-1/2" dia. aluminum cap and permanent magnet encased in a 6" dia. PVC pipe with an aluminum access cover.



*This document was prepared by DCI and GBC for use by Iowa County, Iowa.*