

Iowa County, Iowa  
Iowa South Zone (1402)  
Horiz. Datum: NAD83(NSRS2007)  
Vert. Datum: NAVD 1988  
US Survey Feet  
**2008**

Point Name: **24**

**Designation:** 92-24 Johnson Co GPS Control Pt (Set by ASI in 1992)

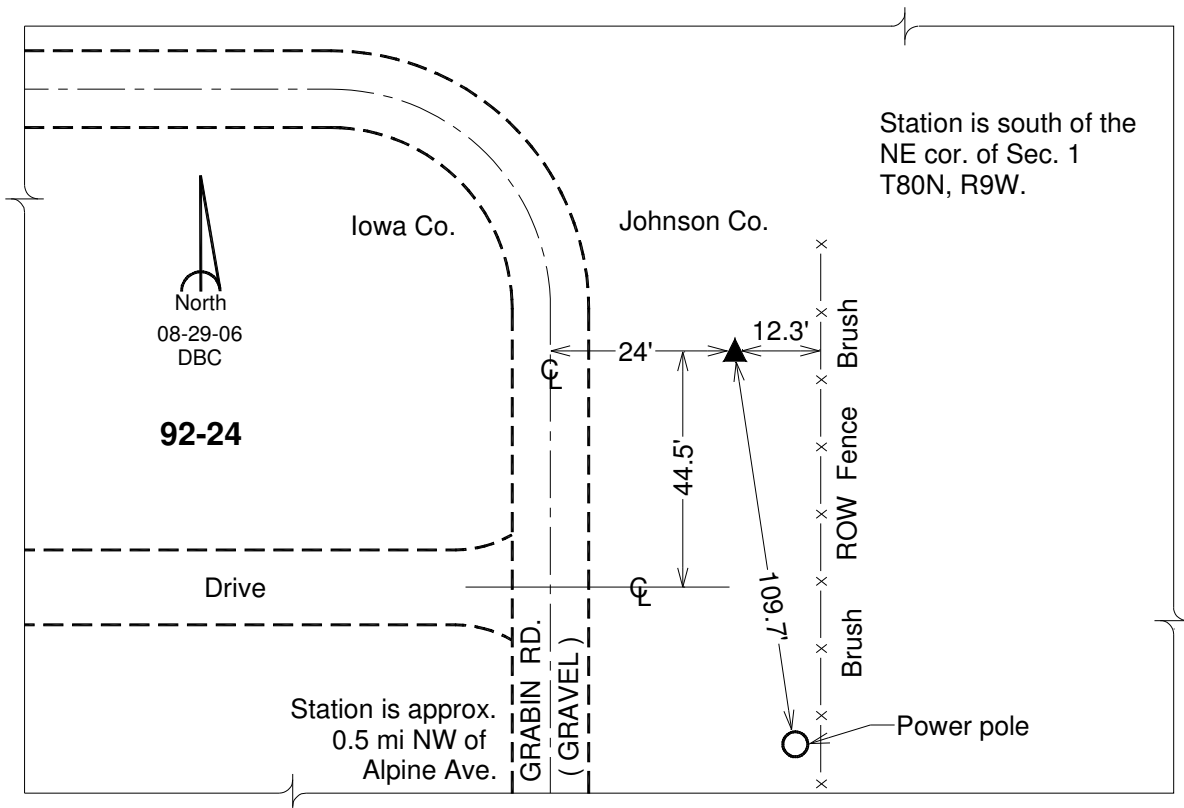
Northing: **650423.70**sft Easting: **2095563.99**sft

Orthometric Height: **757.57**sft Ellipsoid Height: **651.61**sft **Geoid03**

Latitude: **41°46'23.56354"N** Longitude: **91°49'52.89390"W**

Mapping Angle: **1°05'57"** Combination Scale Factor: **0.99996713**

**Monument Type:** 5/8" dia. driven aluminum rod with a 2-1/2" dia. aluminum cap and permanent magnet encased in a 6" dia. PVC pipe with an aluminum access cover.



*This document was prepared by DCI and GBC for use by Iowa County, Iowa.*