

Iowa County, Iowa
Iowa South Zone (1402)
Horiz. Datum: NAD83(NSRS2007)
Vert. Datum: NAVD 1988
US Survey Feet
2008

Point Name: **25**

Designation: 92-25 Johnson Co GPS Control Pt (Set by ASI in 1992)

Northing: **640082.04**sft Easting: **2095465.52**sft

Orthometric Height: **872.67**sft Ellipsoid Height: **766.54**sft **Geoid03**

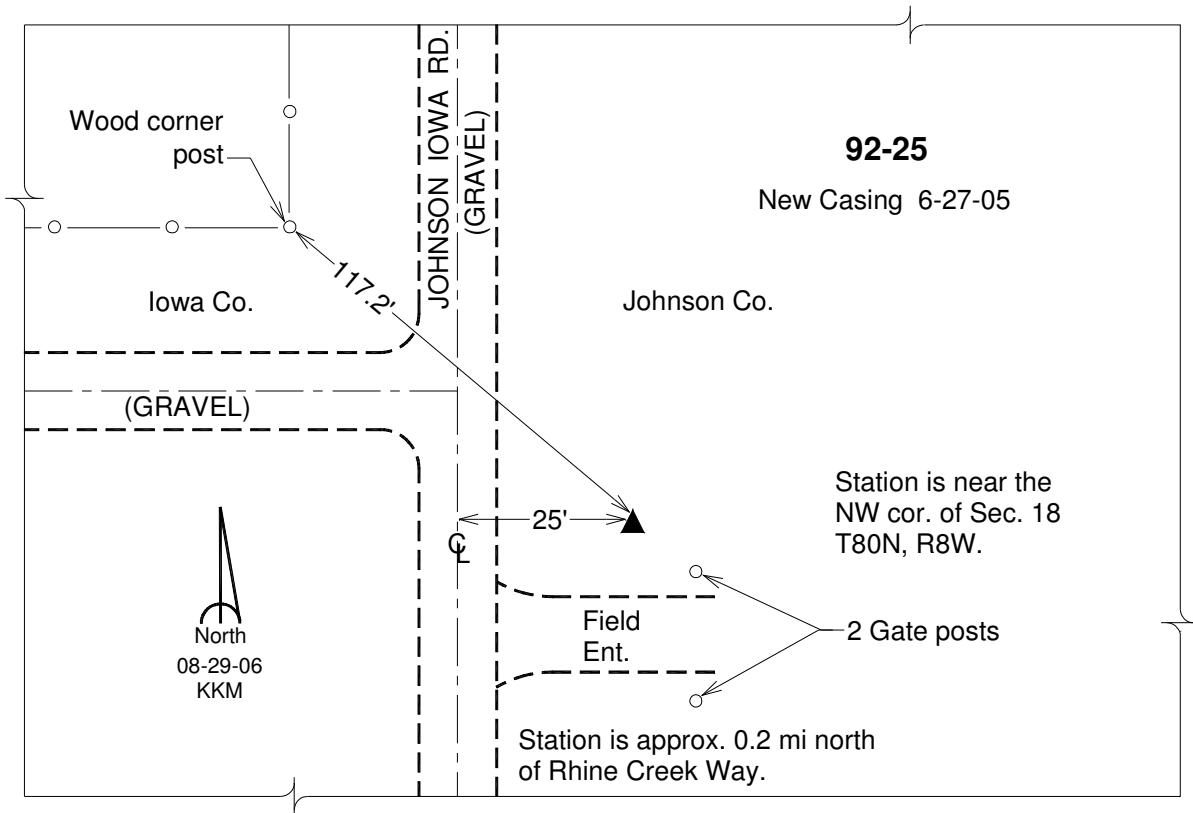
Latitude: **41°44'41.43201"N**

Longitude: **91°49'56.80962"W**

Mapping Angle: **1°05'54"**

Combination Scale Factor: **0.99995682**

Monument Type: 5/8" dia. driven aluminum rod with a 2-1/2" dia. aluminum cap and permanent magnet encased in a 6" dia. PVC pipe with an aluminum access cover.



This document was prepared by DCI and GBC for use by Iowa County, Iowa.