

Iowa County, Iowa
Iowa South Zone (1402)
Horiz. Datum: NAD83(NSRS2007)
Vert. Datum: NAVD 1988
US Survey Feet
2008

Point Name: **34**

Designation: 92-34 Johnson Co GPS Control Pt (Set by ASI in 1992)

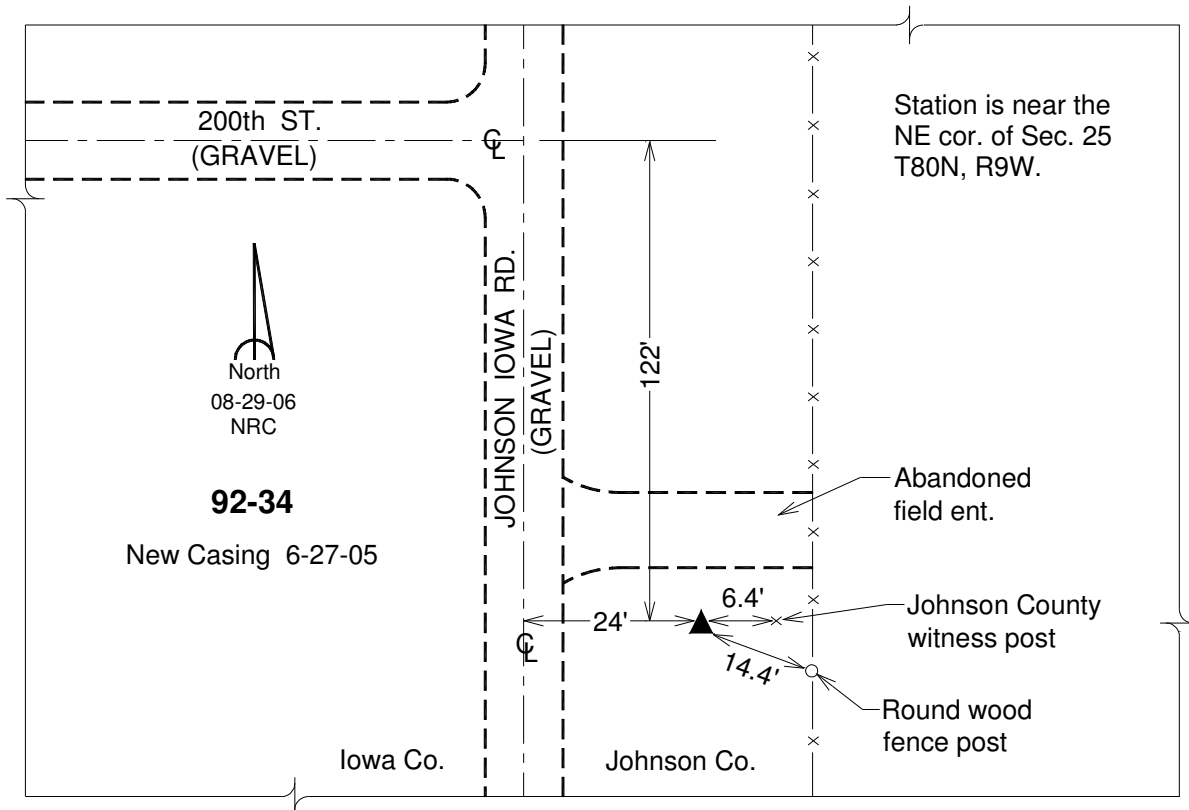
Northing: **629390.22sft** Easting: **2095377.59sft**

Orthometric Height: **787.26sft** Ellipsoid Height: **681.10sft** **Geoid03**

Latitude: **41°42'55.83870"N** Longitude: **91°50'00.67138"W**

Mapping Angle: **1°05'52"** Combination Scale Factor: **0.99995616**

Monument Type: 5/8" dia. driven aluminum rod with a 2-1/2" dia. aluminum cap and permanent magnet encased in a 6" dia. PVC pipe with an aluminum access cover.



This document was prepared by DCI and GBC for use by Iowa County, Iowa.