

Iowa County, Iowa
 Iowa South Zone (1402)
 Horiz. Datum: NAD83(NSRS2007)
 Vert. Datum: NAVD 1988
 US Survey Feet
2008

Point Name: **35**

Designation: 92-35 Johnson Co GPS Control Pt (Set by ASI in 1992)

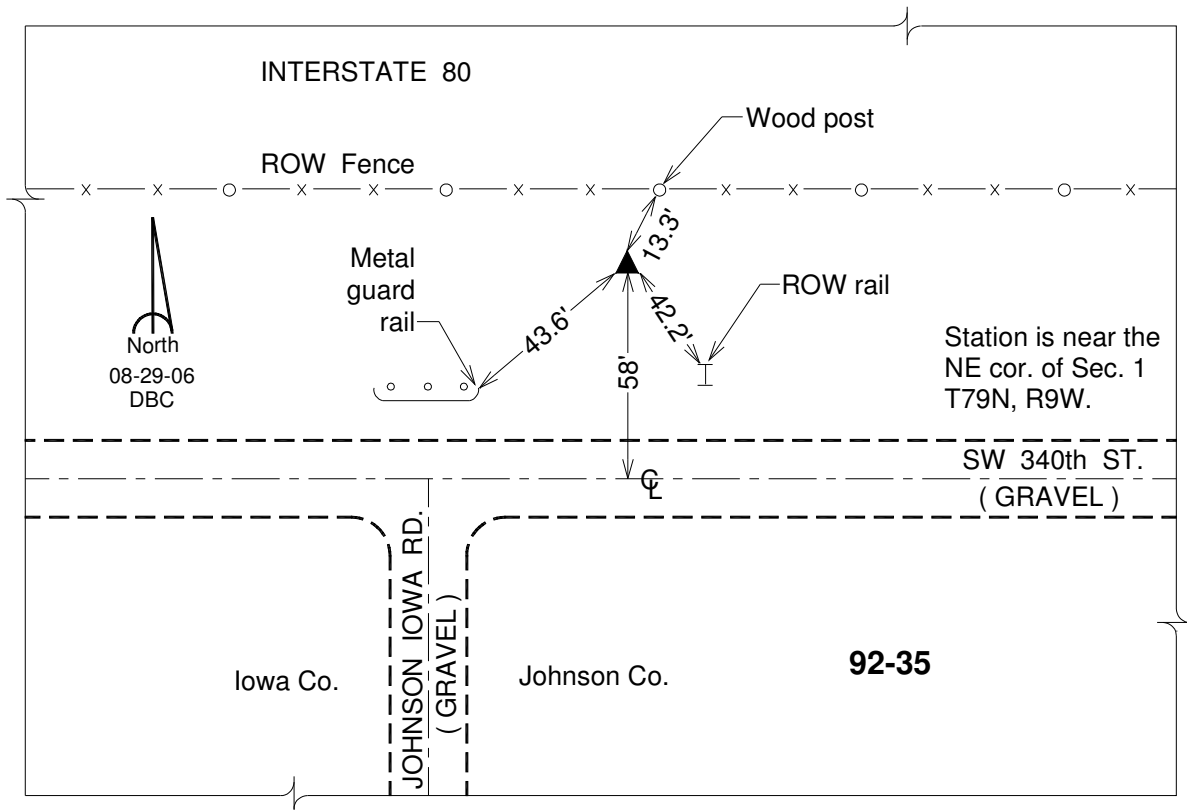
Northing: **618950.74**sft Easting: **2095446.41**sft

Orthometric Height: **824.65**sft Ellipsoid Height: **718.40**sft **Geoid03**

Latitude: **41°41'12.70719"N** Longitude: **91°50'02.40036"W**

Mapping Angle: **1°05'51"** Combination Scale Factor: **0.99995002**

Monument Type: 5/8" dia. driven aluminum rod with a 2-1/2" dia. aluminum cap and permanent magnet encased in a 6" dia. PVC pipe with an aluminum access cover.



This document was prepared by DCI and GBC for use by Iowa County, Iowa.