

**Iowa County, Iowa**  
 Iowa South Zone (1402)  
 Horiz. Datum: NAD83(NSRS2007)  
 Vert. Datum: NAVD 1988  
 US Survey Feet  
**2008**

Point Name: **55**

**Designation:** 92-55 Johnson Co GPS Control Pt (Set by ASI in 1992)

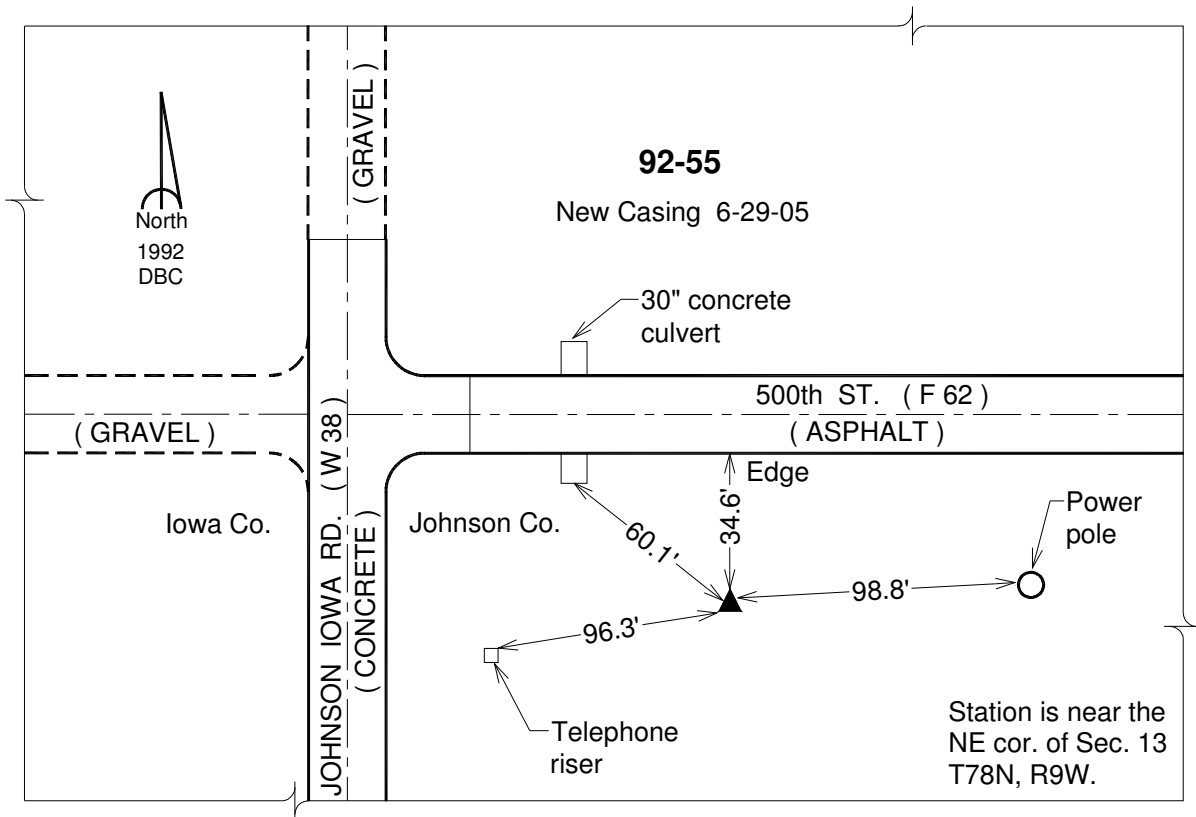
Northing: **576182.79**sft    Easting: **2098113.84**sft

Orthometric Height: **742.28**sft    Ellipsoid Height: **635.55**sft    **Geoid03**

Latitude: **41°34'09.74133"N**                      Longitude: **91°49'38.08974"W**

Mapping Angle: **1°06'07"**                      Combination Scale Factor: **0.99993869**

**Monument Type:** 5/8" dia. driven aluminum rod with a 2-1/2" dia. aluminum cap and permanent magnet encased in a 6" dia. PVC pipe with an aluminum access cover.



*This document was prepared by DCI and GBC for use by Iowa County, Iowa.*