

Iowa County, Iowa
 Iowa South Zone (1402)
 Horiz. Datum: NAD83(NSRS2007)
 Vert. Datum: NAVD 1988
 US Survey Feet
2008

Point Name: **64**

Designation: 92-64 Johnson Co GPS Control Pt (Set by ASI in 1992)

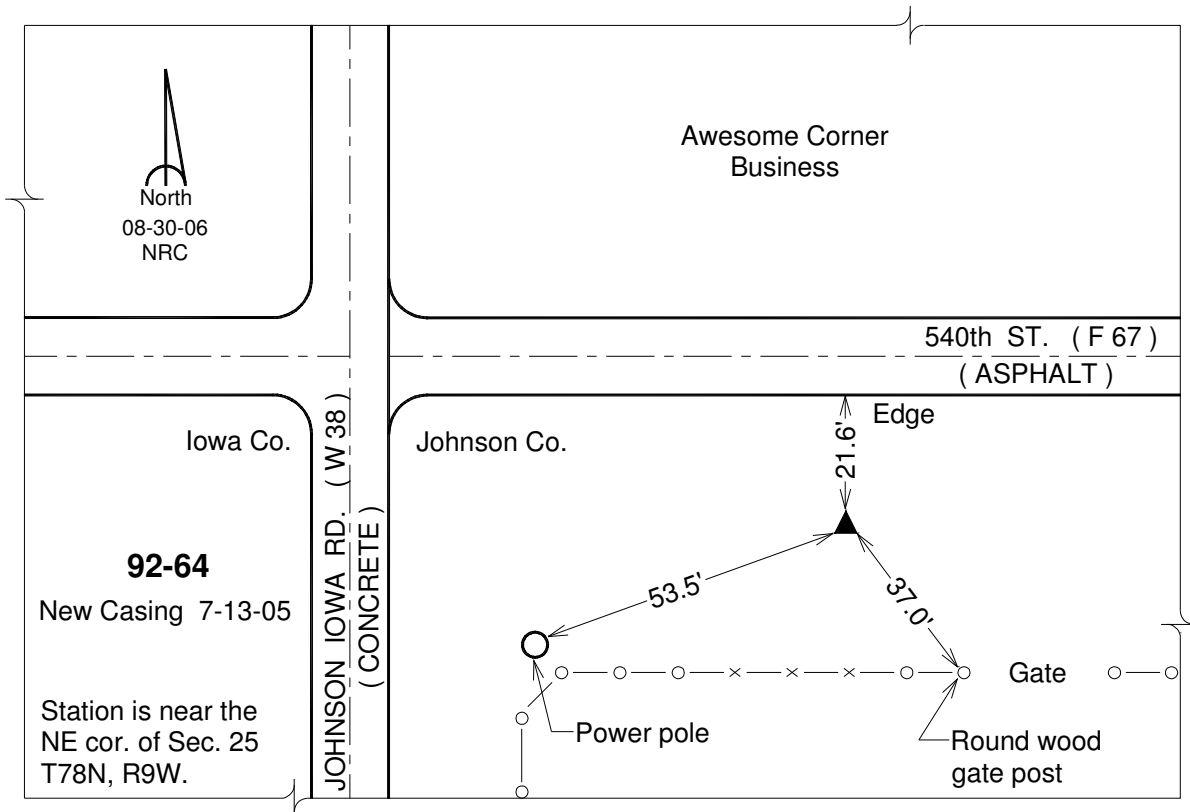
Northing: **565634.09sft** Easting: **2098041.21sft**

Orthometric Height: **734.09sft** Ellipsoid Height: **627.22sft** **Geoid03**

Latitude: **41°32'25.55330"N** Longitude: **91°49'41.71216"W**

Mapping Angle: **1°06'04"** Combination Scale Factor: **0.99993597**

Monument Type: 5/8" dia. driven aluminum rod with a 2-1/2" dia. aluminum cap and permanent magnet encased in a 6" dia. PVC pipe with an aluminum access cover.



This document was prepared by DCI and GBC for use by Iowa County, Iowa.