

**Iowa County, Iowa**  
 Iowa South Zone (1402)  
 Horiz. Datum: NAD83(NSRS2007)  
 Vert. Datum: NAVD 1988  
 US Survey Feet  
**2008**

Point Name: **65**

**Designation:** 92-65 Johnson Co GPS Control Pt (Set by ASI in 1992)

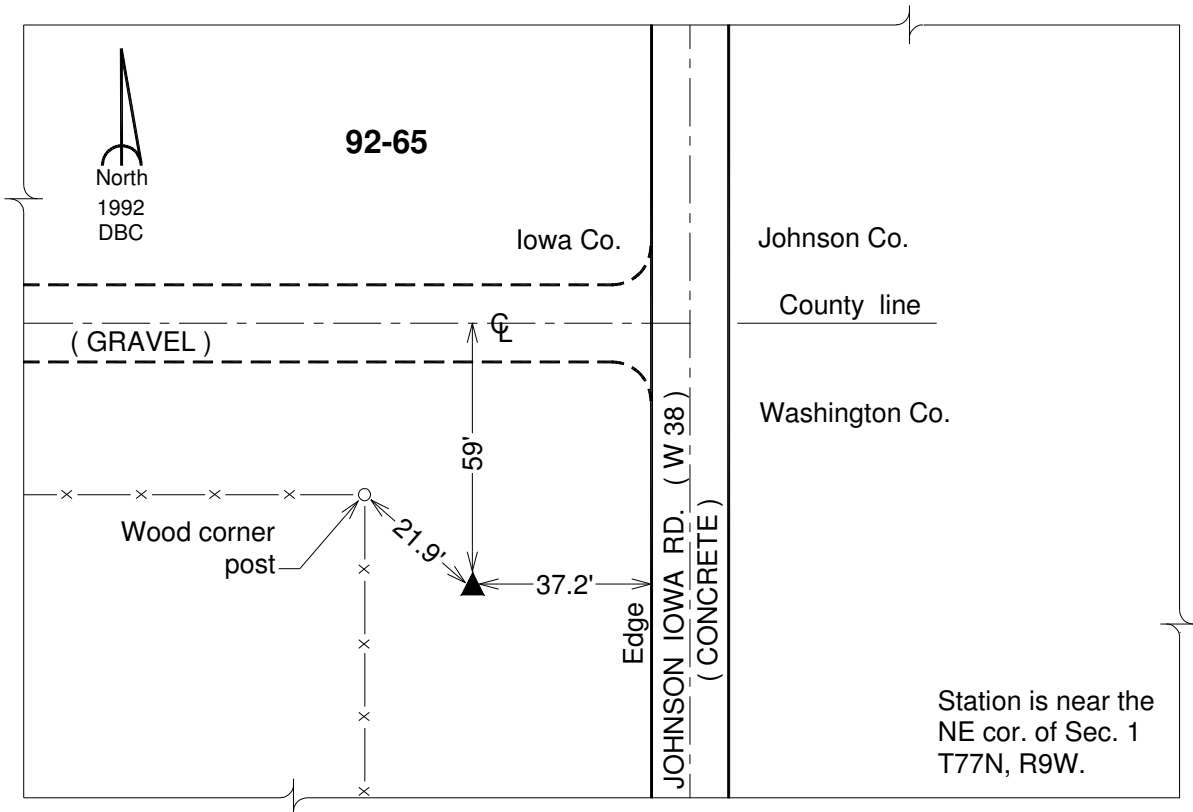
Northing: **555021.00sft**    Easting: **2097931.44sft**

Orthometric Height: **727.29sft**    Ellipsoid Height: **620.34sft**    **Geoid03**

Latitude: **41°30'40.73538"N**    Longitude: **91°49'45.83582"W**

Mapping Angle: **1°06'02"**    Combination Scale Factor: **0.99993342**

**Monument Type:** 5/8" dia. driven aluminum rod with a 2-1/2" dia. aluminum cap and permanent magnet encased in a 6" dia. PVC pipe with an aluminum access cover.



*This document was prepared by DCI and GBC for use by Iowa County, Iowa.*