

Iowa County, Iowa
Iowa South Zone (1402)
Horiz. Datum: NAD83(NSRS2007)
Vert. Datum: NAVD 1988
US Survey Feet
2008

Point Name: **2101**

Designation: 96-101 Washington Co GPS Control Pt (Set by ASI in 1996)

Northing: **554256.11sft** Easting: **2064731.49sft**

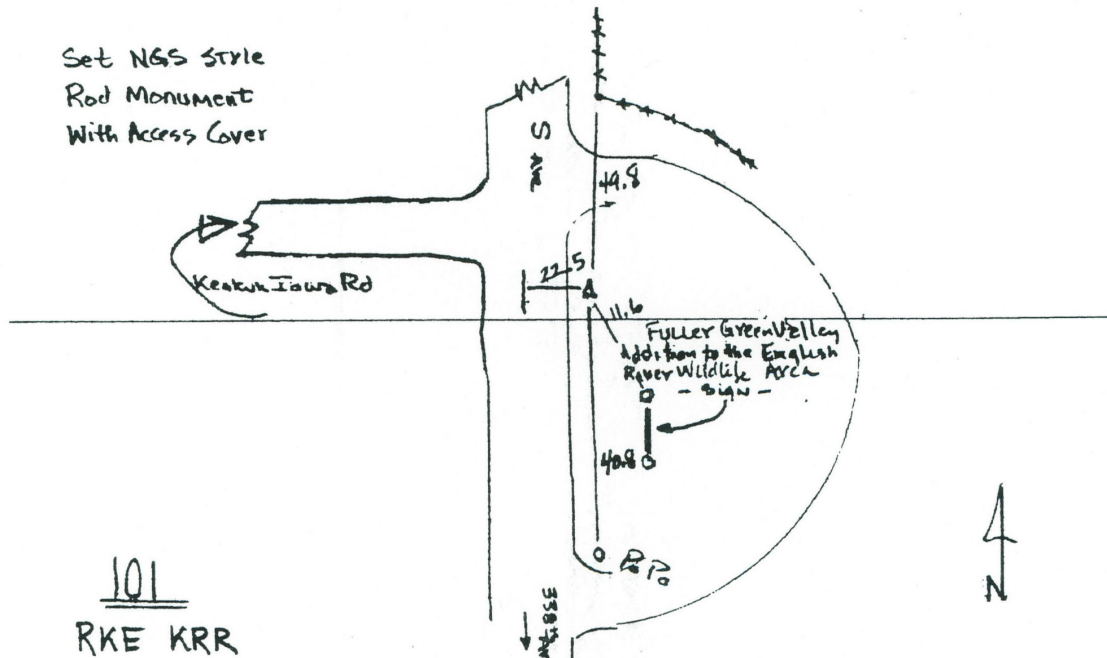
Orthometric Height: **713.30sft** Ellipsoid Height: **606.68sft** **Geoid03**

Latitude: **41°30'39.25047"N** Longitude: **91°57'02.34195"W**

Mapping Angle: **1°01'14"** Combination Scale Factor: **0.99993403**

Monument Type: 5/8" dia. driven aluminum rod with a 2-1/2" dia. aluminum cap and permanent magnet encased in a 6" dia. PVC pipe with an aluminum access cover.

To Reach: 25 ft. East of "S" Av., 50 ft. North of Keokuk-Iowa Rd. at west side of parking lot for Fuller Green Valley Addition to the English River Wildlife Area. Near the S.E. corner of Sec 36, T77N, R10W.



This document was prepared by DCI and GBC for use by Iowa County, Iowa.