

Iowa County, Iowa
 Iowa South Zone (1402)
 Horiz. Datum: NAD83(NSRS2007)
 Vert. Datum: NAVD 1988
 US Survey Feet
2008

Point Name: **2102**

Designation: 96-102 Washington Co GPS Control Pt (Set by ASI in 1996)

Northing: **554673.30sft** Easting: **2082177.64sft**

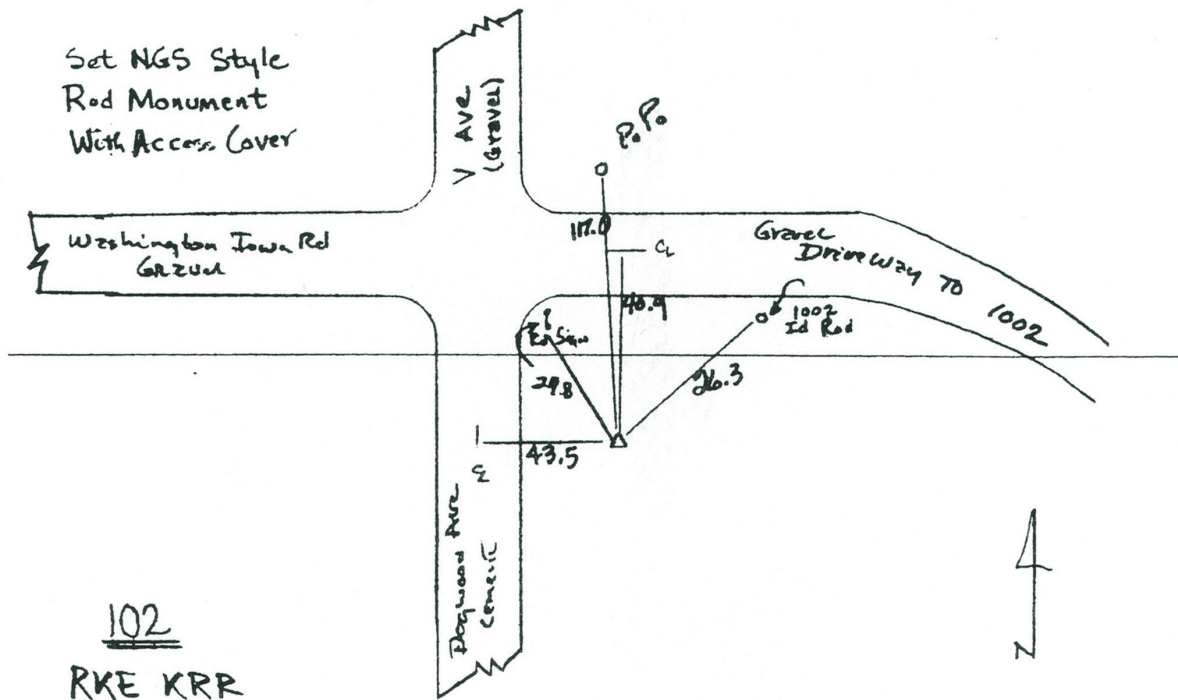
Orthometric Height: **748.68sft** Ellipsoid Height: **641.88sft** **Geoid03**

Latitude: **41°30'40.23845"N** Longitude: **91°53'12.96054"W**

Mapping Angle: **1°03'45"** Combination Scale Factor: **0.99993237**

Monument Type: 5/8" dia. driven aluminum rod with a 2-1/2" dia. aluminum cap and permanent magnet encased in a 6" dia. PVC pipe with an aluminum access cover.

To Reach: 43 ft. East of Dogwood Av., (W21), 40 ft. South of Iowa Washington Rd. Near the N.W. corner of Sec 3, T77N, R9W.



This document was prepared by DCI and GBC for use by Iowa County, Iowa.