

**Iowa County, Iowa**  
 Iowa South Zone (1402)  
 Horiz. Datum: NAD83(NSRS2007)  
 Vert. Datum: NAVD 1988  
 US Survey Feet  
**2008**

Point Name: **3217**

**Designation:** 99-217 Iowa Co GPS Control Pt (Set by ASI in 1999)

Northing: **552493.51**sft    Easting: **1969782.87**sft

Orthometric Height: **904.74**sft    Ellipsoid Height: **799.17**sft    **Geoid03**

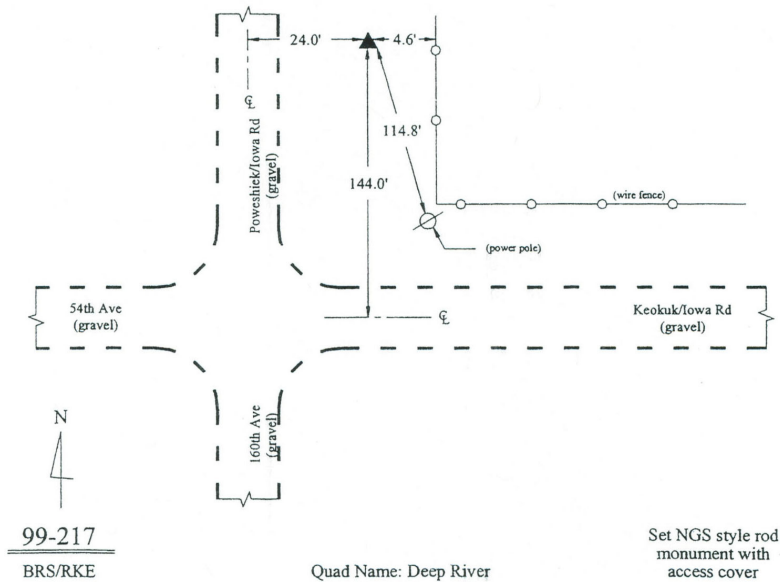
Latitude: **41°30'36.67715"N**    Longitude: **92°17'50.58881"W**

Mapping Angle: **0°47'32"**    Combination Scale Factor: **0.99992478**

**Monument Type:** 5/8" dia. driven aluminum rod with a 2-1/2" dia. aluminum cap and permanent magnet encased in a 6" dia. PVC pipe with an aluminum access cover.

**To Reach:** 30ft W of Poweshiek/Iowa Rd and 150ft N of Keokuk/Iowa Rd. Near the SW Corner of Sec 31, T78N, R12W.

Date Printed March 22, 2000



*This document was prepared by DCI and GBC for use by Iowa County, Iowa.*