

Iowa County, Iowa
Iowa South Zone (1402)
Horiz. Datum: NAD83(NSRS2007)
Vert. Datum: NAVD 1988
US Survey Feet
2008

Point Name: **3218**

Designation: 99-218 Iowa Co GPS Control Pt (Set by ASI in 1999)

Northing: **553057.06sft** Easting: **2001471.23sft**

Orthometric Height: **828.15sft** Ellipsoid Height: **722.36sft** **Geoid03**

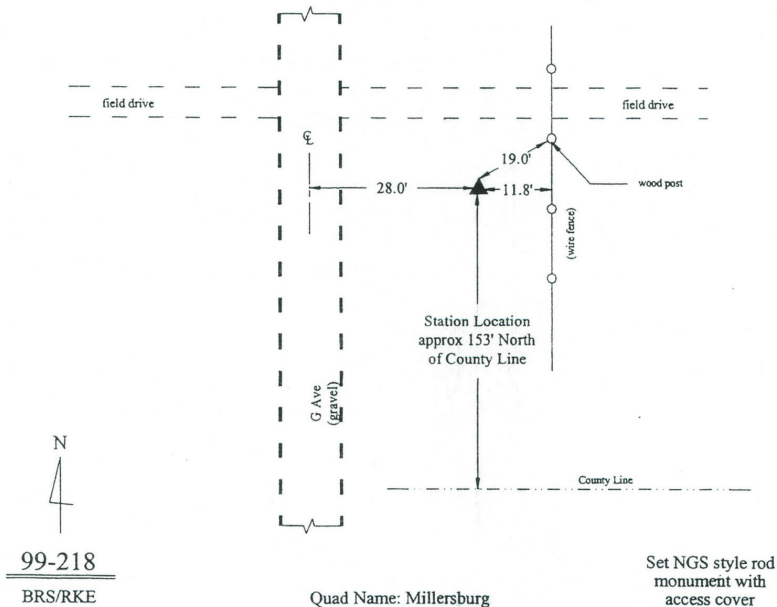
Latitude: **41°30'37.70777"N** Longitude: **92°10'54.00434"W**

Mapping Angle: **0°52'06"** Combination Scale Factor: **0.99992847**

Monument Type: 5/8" dia. driven aluminum rod with a 2-1/2" dia. aluminum cap and permanent magnet encased in a 6" dia. PVC pipe with an aluminum access cover.

To Reach: 30ft E of "G" Ave and 150ft N of Iowa/Keokuk Co line. Near the SW Corner of Sec 31, T78N, R11W.

Date Printed March 22, 2000



This document was prepared by DCI and GBC for use by Iowa County, Iowa.