

Iowa County, Iowa  
Iowa South Zone (1402)  
Horiz. Datum: NAD83(NSRS2007)  
Vert. Datum: NAVD 1988  
US Survey Feet  
**2008**

Point Name: **3423**

**Designation:** 2003-423 Keokuk Co GPS Control Pt (Set by DCI in 2003)

Northing: **551549.56**sft Easting: **1985604.40**sft

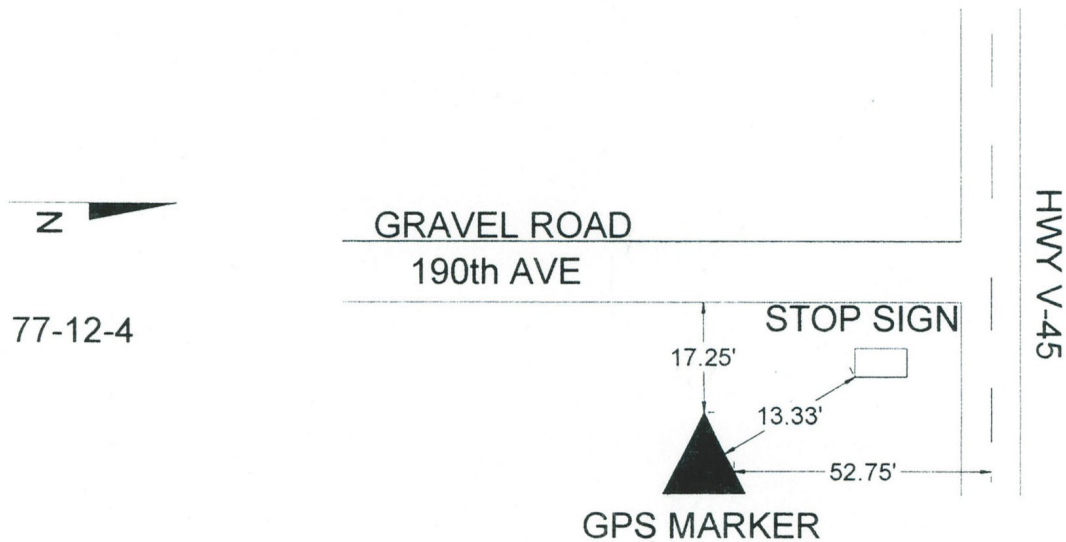
Orthometric Height: **888.71**sft Ellipsoid Height: **783.09**sft **Geoid03**

Latitude: **41°30'25.13873"N** Longitude: **92°14'22.82814"W**

Mapping Angle: **0°49'49"** Combination Scale Factor: **0.99992524**

**Monument Type:** 5/8" dia. driven aluminum rod with a 2-1/2" dia. aluminum cap and permanent magnet encased in a 5" dia. PVC pipe with an aluminum access cover.

**# 423**



*This document was prepared by DCI and GBC for use by Iowa County, Iowa.*