

Iowa County, Iowa
Iowa South Zone (1402)
Horiz. Datum: NAD83(NSRS2007)
Vert. Datum: NAVD 1988
US Survey Feet
2008

Point Name: **3456**

Designation: 2003-456 Keokuk Co GPS Control Pt (Set by DCI in 2003)

Northing: **553799.51**sft Easting: **2047656.29**sft

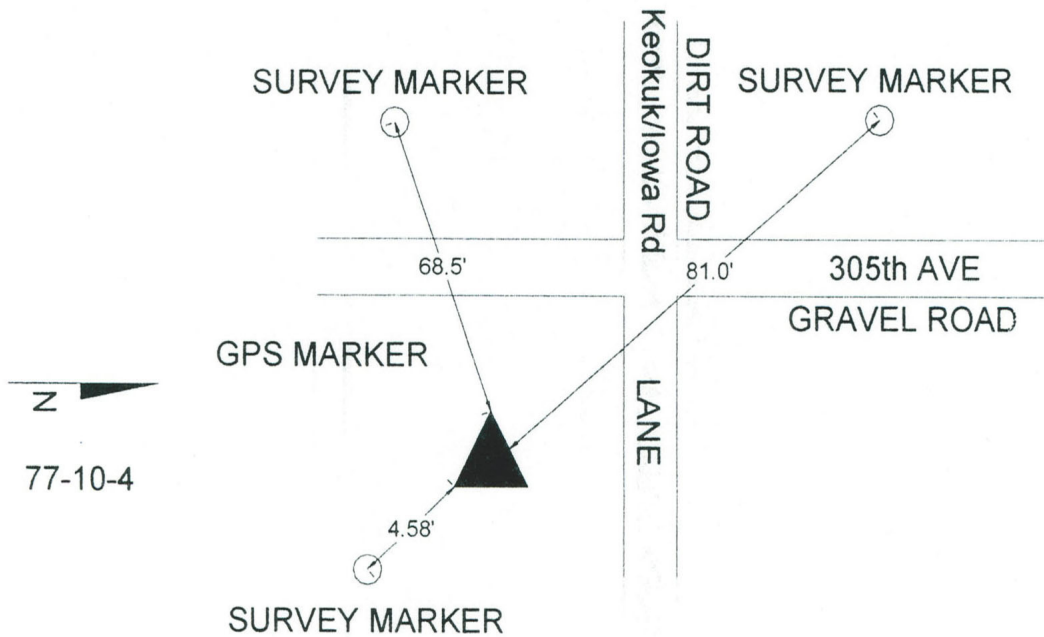
Orthometric Height: **809.11**sft Ellipsoid Height: **702.63**sft **Geoid03**

Latitude: **41°30'37.68429"N** Longitude: **92°00'46.85500"W**

Mapping Angle: **0°58'46"** Combination Scale Factor: **0.99992941**

Monument Type: 5/8" dia. driven aluminum rod with a 2-1/2" dia. aluminum cap and permanent magnet encased in a 5" dia. PVC pipe with an aluminum access cover.

456



This document was prepared by DCI and GBC for use by Iowa County, Iowa.