

Iowa County, Iowa
Iowa South Zone (1402)
Horiz. Datum: NAD83(NSRS2007)
Vert. Datum: NAVD 1988
US Survey Feet
2008

Point Name: **4001**

Designation: 2003-001 Benton Co GPS Control Pt (Set by DCI in 2003)

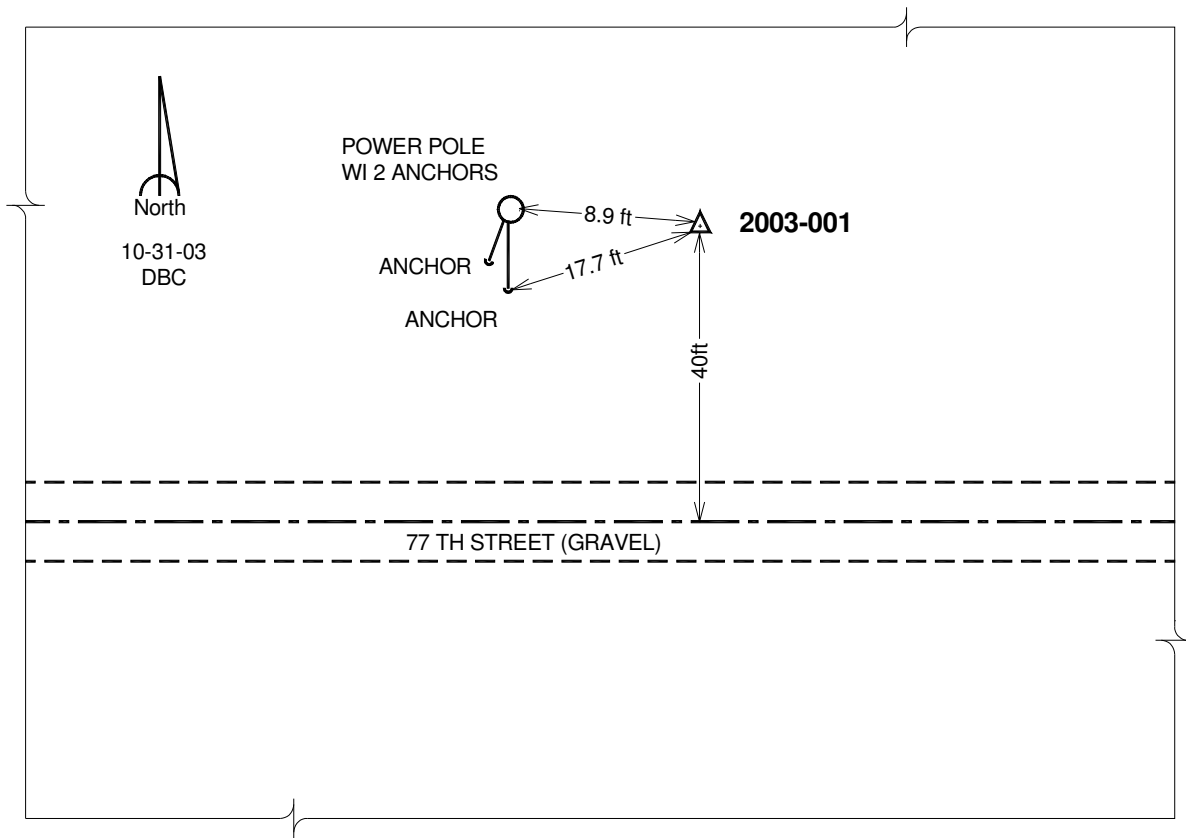
Northing: **696915.05sft** Easting: **1968724.11sft**

Orthometric Height: **786.53sft** Ellipsoid Height: **682.51sft** **Geoid03**

Latitude: **41°54'23.49923"N** Longitude: **92°17'38.18382"W**

Mapping Angle: **0°47'40"** Combination Scale Factor: **0.99999163**

Monument Type: 5/8" dia. driven aluminum rod with a 2-1/2" dia. aluminum cap and permanent magnet encased in a 5" dia. PVC pipe with an aluminum access cover.



This document was prepared by DCI and GBC for use by Iowa County, Iowa.