

Iowa County, Iowa  
Iowa South Zone (1402)  
Horiz. Datum: NAD83(NSRS2007)  
Vert. Datum: NAVD 1988  
US Survey Feet  
**2008**

Point Name: **4010**

**Designation:** 2003-010 Benton Co GPS Control Pt (Set by DCI in 2003)

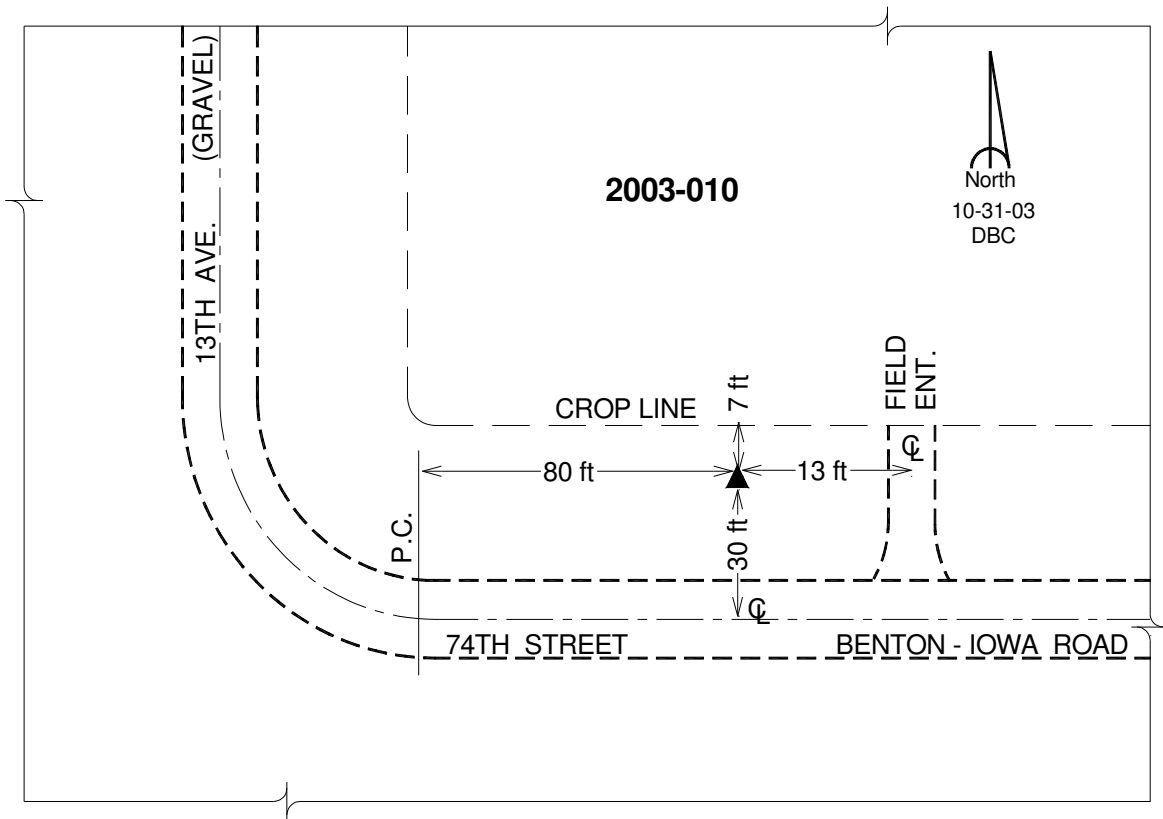
Northing: **681263.06**sft    Easting: **1983937.94**sft

Orthometric Height: **761.74**sft    Ellipsoid Height: **657.46**sft    **Geoid03**

Latitude: **41°51'46.75882"N**    Longitude: **92°14'20.01170"W**

Mapping Angle: **0°49'50"**    Combination Scale Factor: **0.99998374**

**Monument Type:** 5/8" dia. driven aluminum rod with a 2-1/2" dia. aluminum cap and permanent magnet encased in a 5" dia. PVC pipe with an aluminum access cover.



*This document was prepared by DCI and GBC for use by Iowa County, Iowa.*