

Iowa County, Iowa
Iowa South Zone (1402)
Horiz. Datum: NAD83(NSRS2007)
Vert. Datum: NAVD 1988
US Survey Feet
2008

Point Name: **4029**

Designation: 2003-029 Benton Co GPS Control Pt (Set by DCI in 2003)

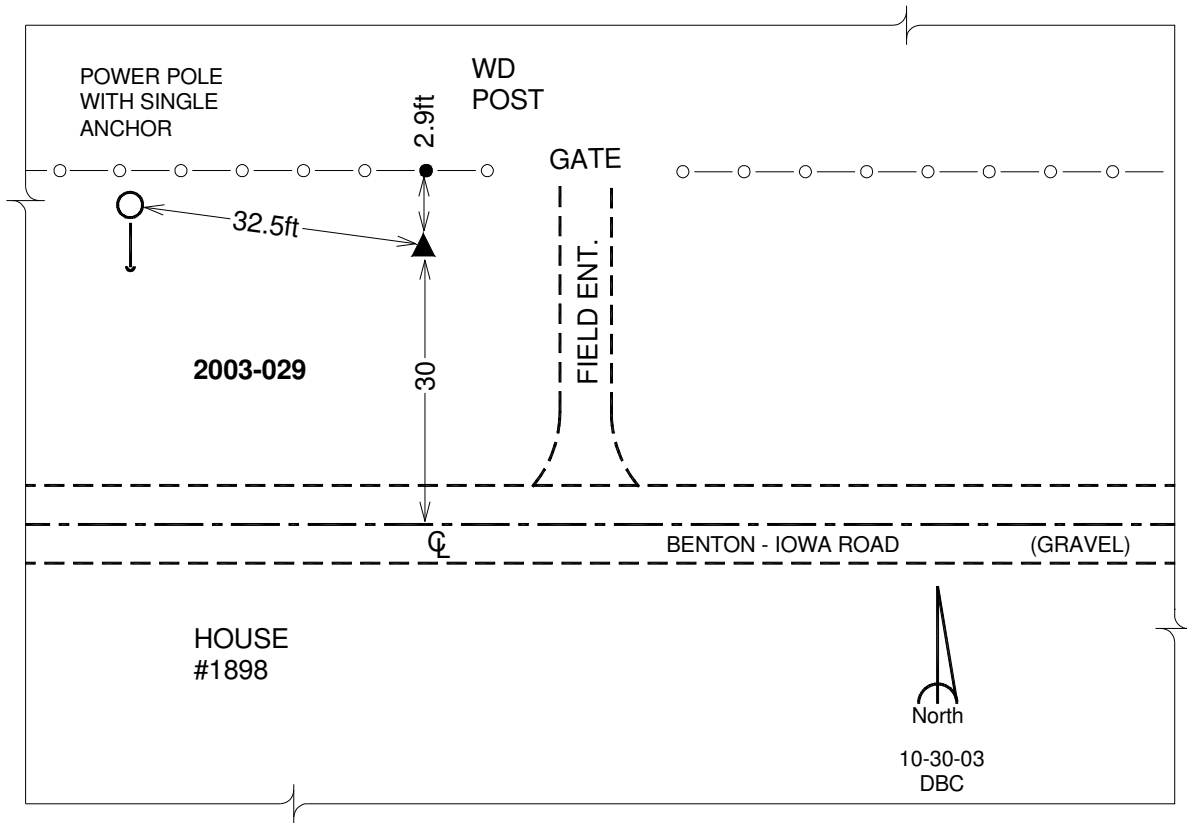
Northing: **681667.73**sft Easting: **2015469.82**sft

Orthometric Height: **930.61**sft Ellipsoid Height: **826.18**sft **Geoid03**

Latitude: **41°51'46.03274"N** Longitude: **92°07'23.26740"W**

Mapping Angle: **0°54'25"** Combination Scale Factor: **0.99997565**

Monument Type: 5/8" dia. driven aluminum rod with a 2-1/2" dia. aluminum cap and permanent magnet encased in a 5" dia. PVC pipe with an aluminum access cover.



This document was prepared by DCI and GBC for use by Iowa County, Iowa.