

Iowa County, Iowa  
Iowa South Zone (1402)  
Horiz. Datum: NAD83(NSRS2007)  
Vert. Datum: NAVD 1988  
US Survey Feet  
**2008**

Point Name: **4048**

**Designation:** 2003-048 Benton Co GPS Control Pt (Set by DCI in 2003)

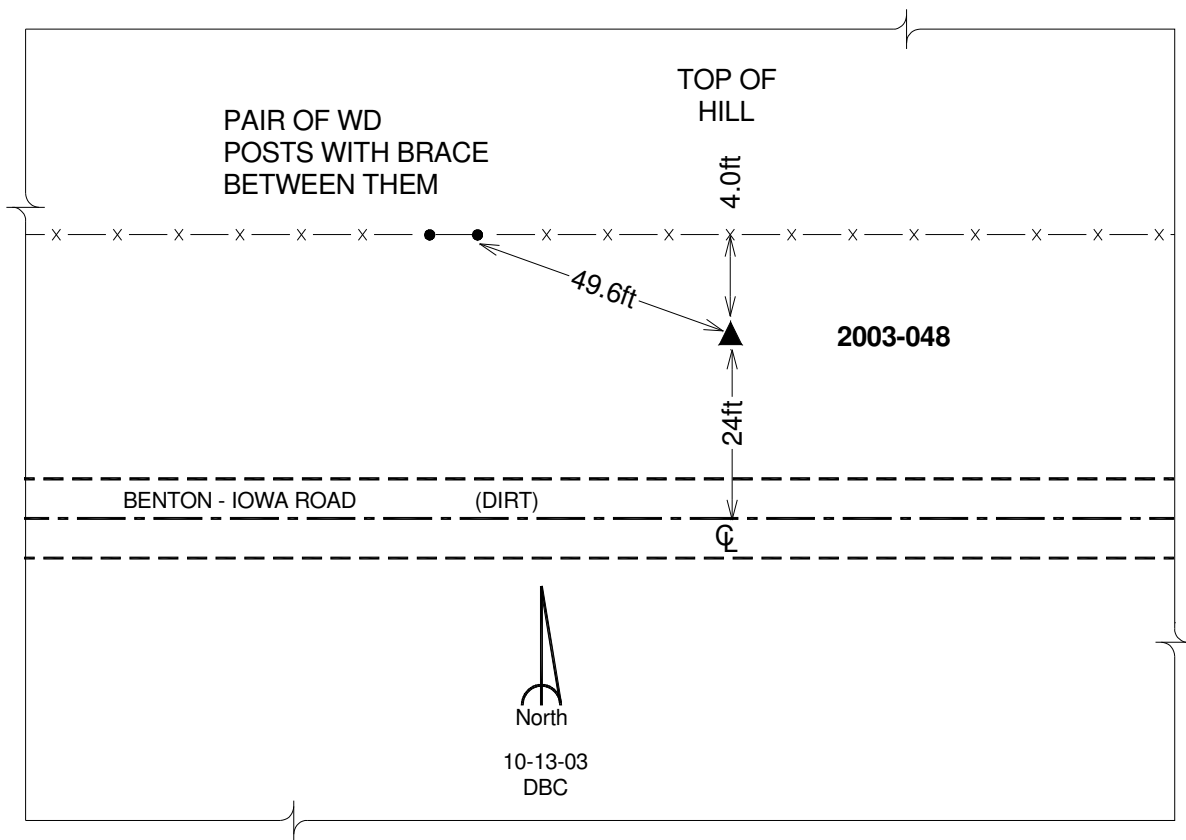
Northing: **682050.66**sft Easting: **2045536.01**sft

Orthometric Height: **884.20**sft Ellipsoid Height: **779.45**sft **Geoid03**

Latitude: **41°51'44.92524"N** Longitude: **92°00'45.89833"W**

Mapping Angle: **0°58'47"** Combination Scale Factor: **0.99997782**

**Monument Type:** 5/8" dia. driven aluminum rod with a 2-1/2" dia. aluminum cap and permanent magnet encased in a 5" dia. PVC pipe with an aluminum access cover.



*This document was prepared by DCI and GBC for use by Iowa County, Iowa.*