

Iowa County, Iowa  
Iowa South Zone (1402)  
Horiz. Datum: NAD83(NSRS2007)  
Vert. Datum: NAVD 1988  
US Survey Feet  
**2008**

Point Name: **4061**

**Designation:** 2007-061 Tama Co GPS Control Pt (Set by DCI in 2003)

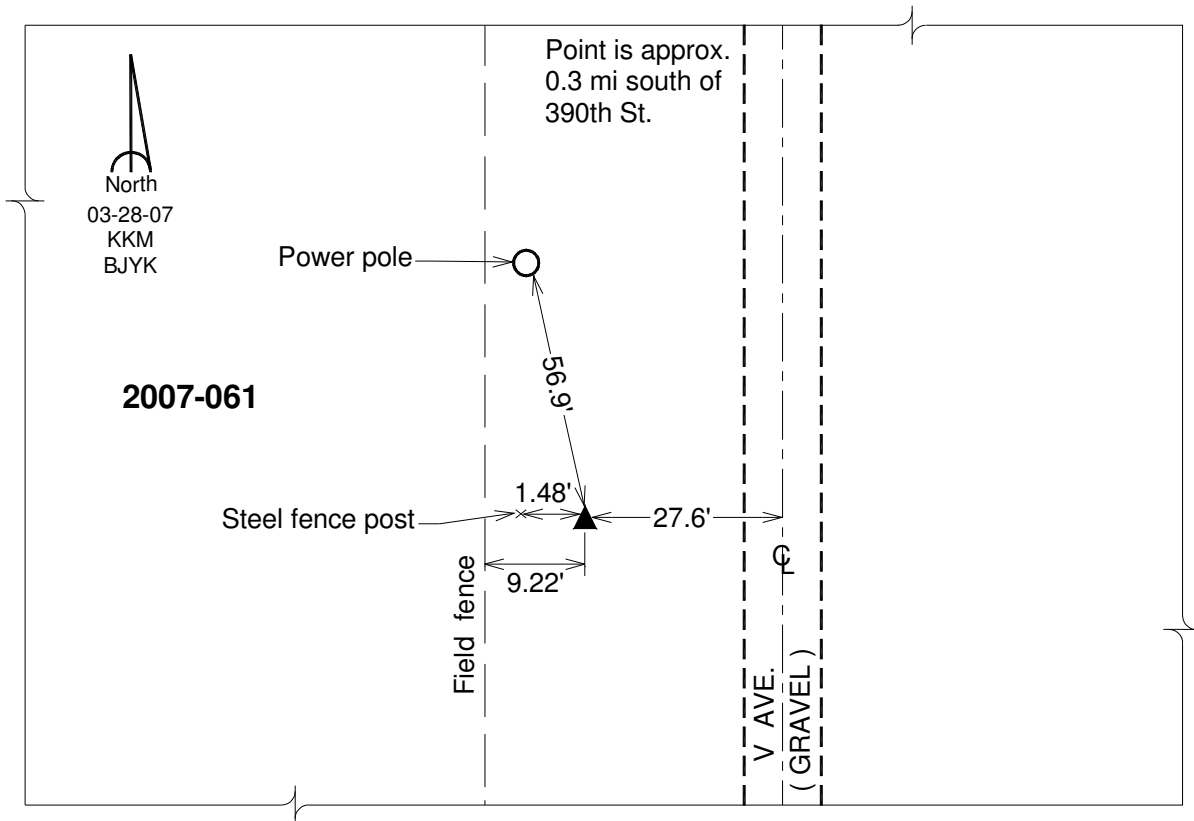
Northing: **681914.49sft** Easting: **1951946.07sft**

Orthometric Height: **930.43sft** Ellipsoid Height: **826.11sft** **Geoid03**

Latitude: **41°51'57.56242"N** Longitude: **92°21'22.65290"W**

Mapping Angle: **0°45'12"** Combination Scale Factor: **0.99997631**

**Monument Type:** 5/8" dia. driven aluminum rod with a 2-1/2" dia. aluminum cap and permanent magnet encased in a 5" dia. PVC pipe with an aluminum access cover.



*This document was prepared by DCI and GBC for use by Iowa County, Iowa.*