

Iowa County, Iowa
Iowa South Zone (1402)
Horiz. Datum: NAD83(NSRS2007)
Vert. Datum: NAVD 1988
US Survey Feet
2008

Point Name: **4068**

Designation: 2003-068 Benton Co GPS Control Pt (Set by DCI in 2003)

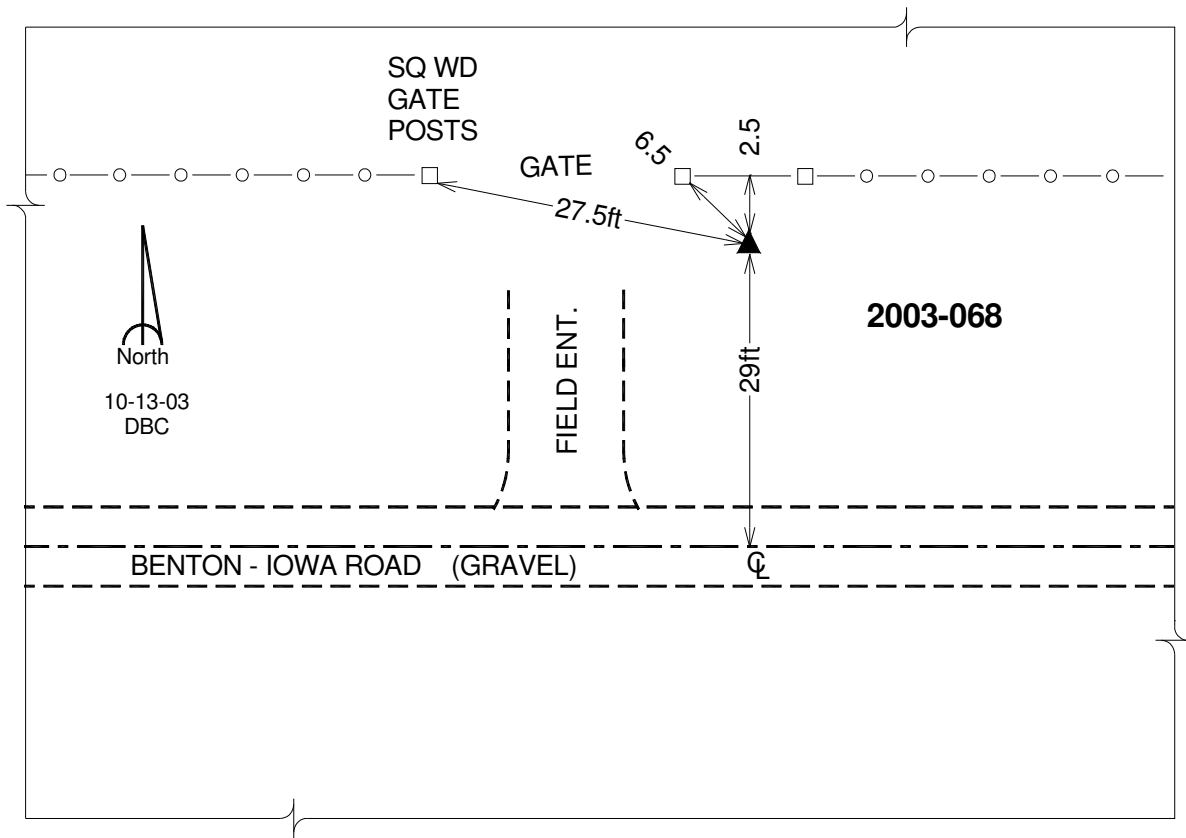
Northing: **682353.46**sft Easting: **2078606.97**sft

Orthometric Height: **845.24**sft Ellipsoid Height: **740.02**sft **Geoid03**

Latitude: **41°51'42.10241"N** Longitude: **91°53'28.85072"W**

Mapping Angle: **1°03'35"** Combination Scale Factor: **0.99997954**

Monument Type: 5/8" dia. driven aluminum rod with a 2-1/2" dia. aluminum cap and permanent magnet encased in a 5" dia. PVC pipe with an aluminum access cover.



This document was prepared by DCI and GBC for use by Iowa County, Iowa.