

Iowa County, Iowa  
Iowa South Zone (1402)  
Horiz. Datum: NAD83(NSRS2007)  
Vert. Datum: NAVD 1988  
US Survey Feet  
**2008**

Point Name: **4106**

**Designation:** CBN horizontal control station "HARTWICK" PID:MH0487

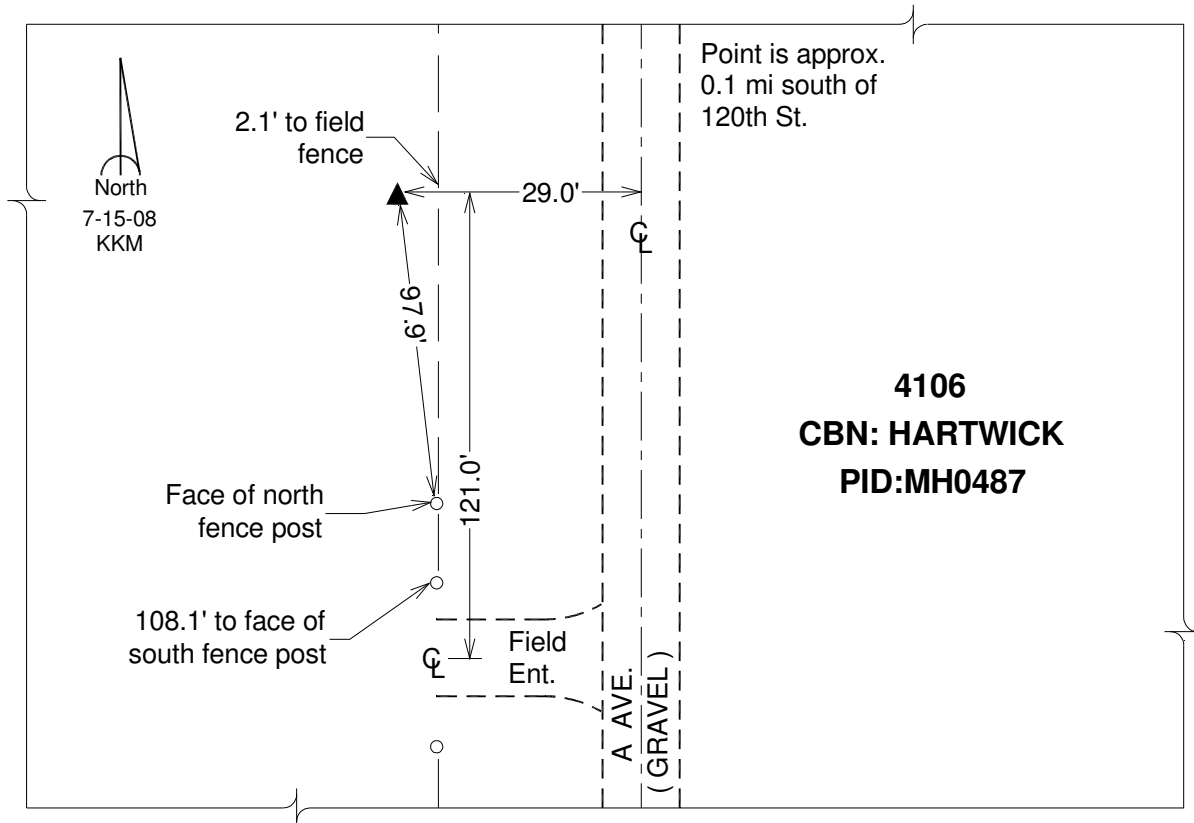
Northing: **669299.33**sft Easting: **1970586.47**sft

Orthometric Height: **935.62**sft Ellipsoid Height: **831.12**sft **Geoid03**

Latitude: **41°49'50.45507"N** Longitude: **92°17'18.64395"W**

Mapping Angle: **0°47'53"** Combination Scale Factor: **0.99996909**

**Monument Type:** Station is a CGS triangulation disk stamped -- HARTWICK 1930 -- and set in the top of a concrete monument.



*This document was prepared by DCI and GBC for use by Iowa County, Iowa.*