

Iowa County, Iowa
Iowa South Zone (1402)
Horiz. Datum: NAD83(NSRS2007)
Vert. Datum: NAVD 1988
US Survey Feet
2008

Point Name: **4202**

Designation: 99-202 Iowa Co GPS Control Pt (Set by ASI in 1999)

Northing: **680626.74sft** Easting: **1998355.33sft**

Orthometric Height: **843.56sft** Ellipsoid Height: **739.22sft** **Geoid03**

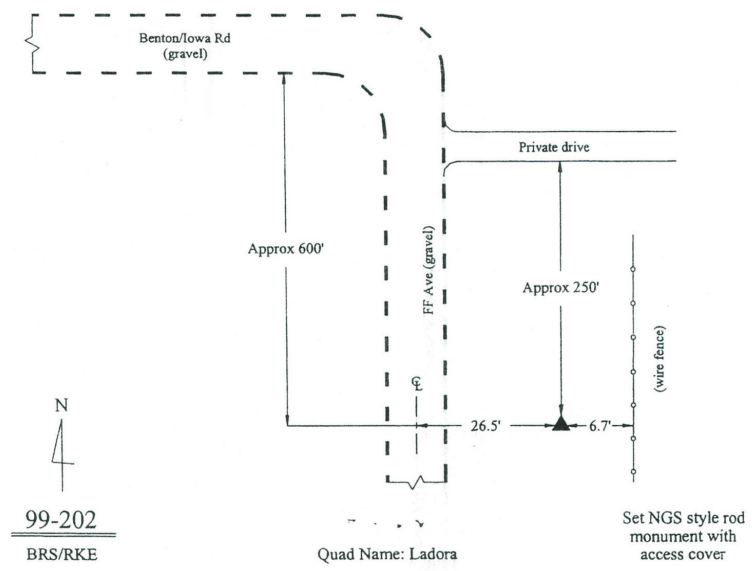
Latitude: **41°51'38.36508"N** Longitude: **92°11'09.62645"W**

Mapping Angle: **0°51'56"** Combination Scale Factor: **0.99997937**

Monument Type: 5/8" dia. driven aluminum rod with a 2-1/2" dia. aluminum cap and permanent magnet encased in a 6" dia. PVC pipe with an aluminum access cover.

To Reach: 30ft E of "FF" Ave and approx 600ft S of Benton/Iowa Road. In the NE 1/4 of Sec 1, T81N, R12W.

Date Printed March 22, 2000



This document was prepared by DCI and GBC for use by Iowa County, Iowa.