

Iowa County, Iowa  
Iowa South Zone (1402)  
Horiz. Datum: NAD83(NSRS2007)  
Vert. Datum: NAVD 1988  
US Survey Feet  
**2008**

Point Name: **4204**

**Designation:** 99-204 Iowa Co GPS Control Pt (Set by ASI in 1999)

Northing: **682073.79sft** Easting: **2063276.32sft**

Orthometric Height: **871.20sft** Ellipsoid Height: **766.16sft** **Geoid03**

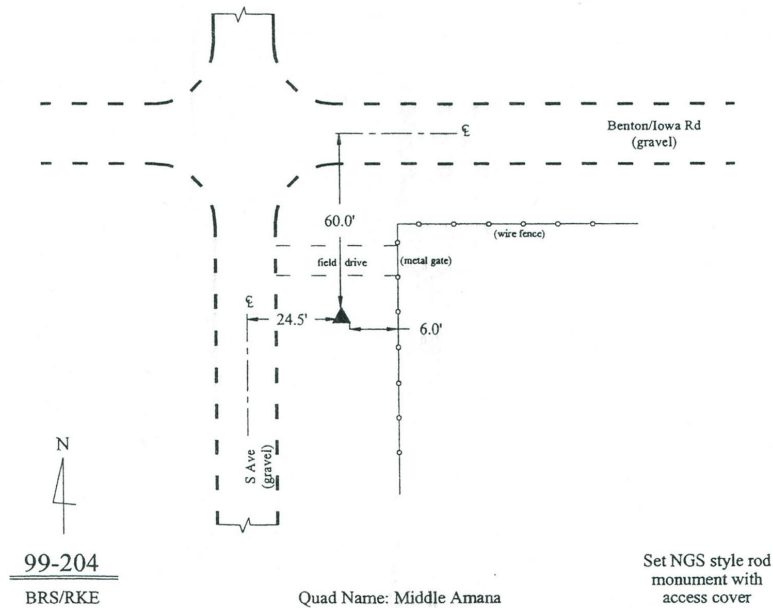
Latitude: **41°51'42.09175"N** Longitude: **91°56'51.48374"W**

Mapping Angle: **1°01'21"** Combination Scale Factor: **0.99997830**

**Monument Type:** 5/8" dia. driven aluminum rod with a 2-1/2" dia. aluminum cap and permanent magnet encased in a 6" dia. PVC pipe with an aluminum access cover.

**To Reach:** 25ft E of "S" Ave and 60ft S of Benton/Iowa Road. Near the NW Corner of Sec 6, T81N, R9W.

Date Printed March 22, 2000



*This document was prepared by DCI and GBC for use by Iowa County, Iowa.*