

Iowa County, Iowa
Iowa South Zone (1402)
Horiz. Datum: NAD83(NSRS2007)
Vert. Datum: NAVD 1988
US Survey Feet
2008

Point Name: **4205**

Designation: 99-205 Iowa Co GPS Control Pt (Set by ASI in 1999)

Northing: **650014.16sft** Easting: **2063723.36sft**

Orthometric Height: **746.76sft** Ellipsoid Height: **641.19sft** **Geoid03**

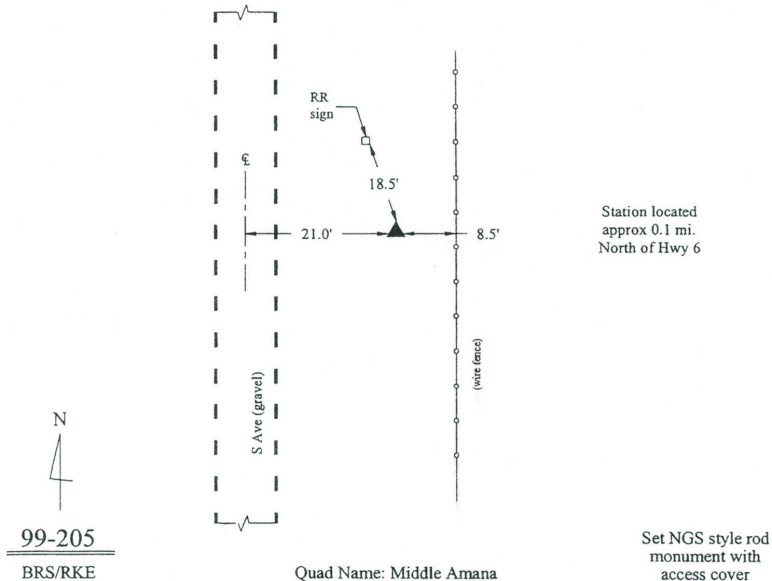
Latitude: **41°46'25.34134"N** Longitude: **91°56'53.13546"W**

Mapping Angle: **1°01'20"** Combination Scale Factor: **0.99996771**

Monument Type: 5/8" dia. driven aluminum rod with a 2-1/2" dia. aluminum cap and permanent magnet encased in a 6" dia. PVC pipe with an aluminum access cover.

To Reach: 20ft E of "S" Ave and 0.1 Mile N of Hwy 6 Trail. Approx 500ft S of the NW Corner of Sec 6, T80N, R9W.

Date Printed March 22, 2000



This document was prepared by DCI and GBC for use by Iowa County, Iowa.