

Iowa County, Iowa
Iowa South Zone (1402)
Horiz. Datum: NAD83(NSRS2007)
Vert. Datum: NAVD 1988
US Survey Feet
2008

Point Name: **4206**

Designation: 99-206 Iowa Co GPS Control Pt (Set by ASI in 1999)

Northing: **650416.91**sft Easting: **2031906.85**sft

Orthometric Height: **809.70**sft Ellipsoid Height: **704.40**sft **Geoid03**

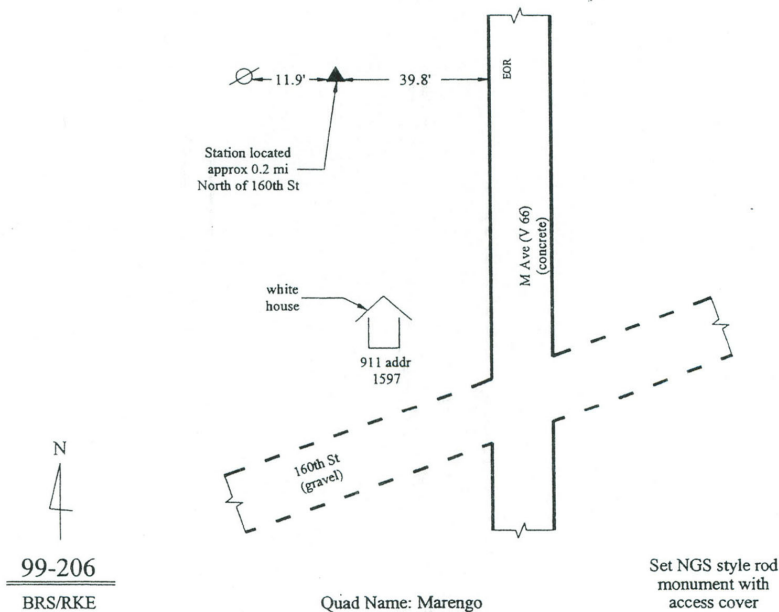
Latitude: **41°46'34.71669"N** Longitude: **92°03'52.88755"W**

Mapping Angle: **0°56'44"** Combination Scale Factor: **0.99996515**

Monument Type: 5/8" dia. driven aluminum rod with a 2-1/2" dia. aluminum cap and permanent magnet encased in a 6" dia. PVC pipe with an aluminum access cover.

To Reach: 60ft W of "M" Ave approx 0.2 Mile N of 160th St. Approx 400ft N of the SW Corner of Section 31, T81N, R10W.

Date Printed March 22, 2000



This document was prepared by DCI and GBC for use by Iowa County, Iowa.