

Iowa County, Iowa
Iowa South Zone (1402)
Horiz. Datum: NAD83(NSRS2007)
Vert. Datum: NAVD 1988
US Survey Feet
2008

Point Name: **4210**

Designation: 99-210 Iowa Co GPS Control Pt (Set by ASI in 1999)

Northing: **617620.12sft** Easting: **2000085.85sft**

Orthometric Height: **883.16sft** Ellipsoid Height: **777.69sft** **Geoid03**

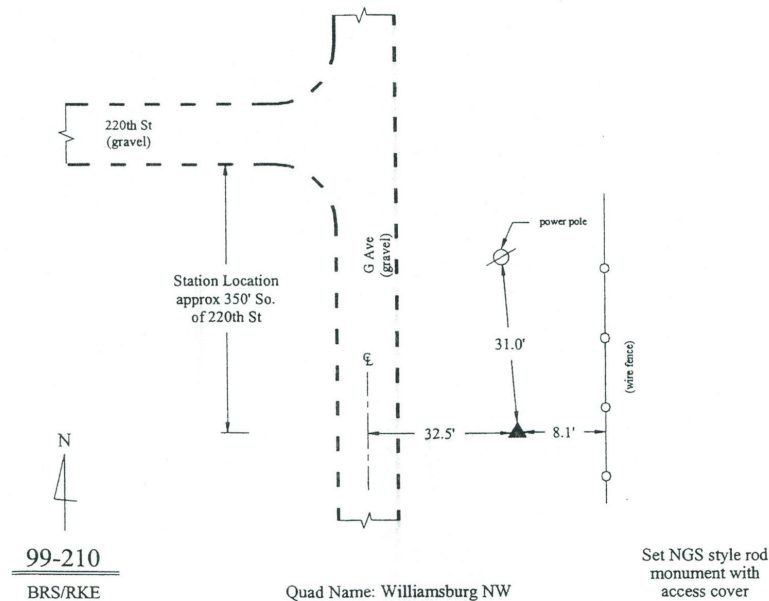
Latitude: **41°41'15.71616"N** Longitude: **92°10'59.36507"W**

Mapping Angle: **0°52'03"** Combination Scale Factor: **0.99994731**

Monument Type: 5/8" dia. driven aluminum rod with a 2-1/2" dia. aluminum cap and permanent magnet encased in a 6" dia. PVC pipe with an aluminum access cover.

To Reach: 30ft E of "G" Ave and 350ft S of 220th St. Approx 350ft S of the NW Corner of Sec 6, T79N, R11W.

Date Printed March 22, 2000



This document was prepared by DCI and GBC for use by Iowa County, Iowa.