

Iowa County, Iowa  
Iowa South Zone (1402)  
Horiz. Datum: NAD83(NSRS2007)  
Vert. Datum: NAVD 1988  
US Survey Feet  
**2008**

Point Name: **4212**

**Designation:** 99-212 Iowa Co GPS Control Pt (Set by ASI in 1999)

Northing: **618629.89sft**    Easting: **2062522.92sft**

Orthometric Height: **850.20sft**    Ellipsoid Height: **744.27sft**    **Geoid03**

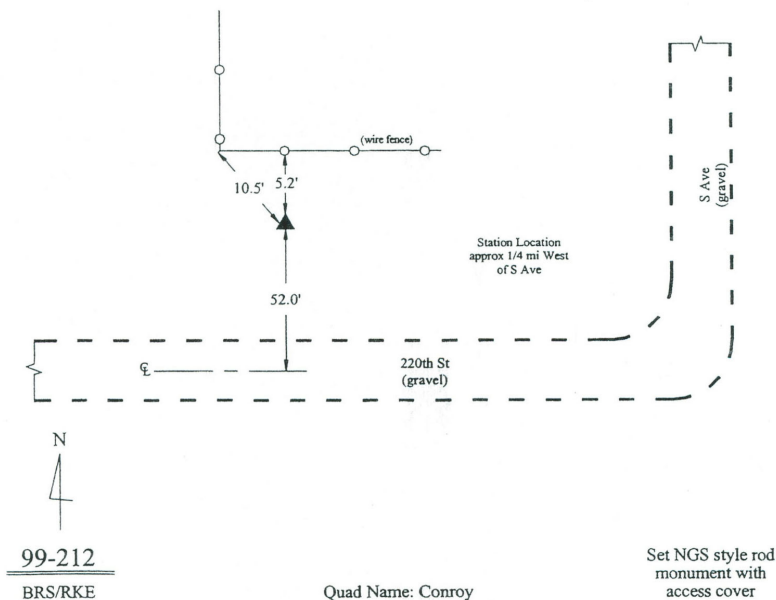
Latitude: **41°41'15.54209"N**    Longitude: **91°57'16.33451"W**

Mapping Angle: **1°01'05"**    Combination Scale Factor: **0.99994890**

**Monument Type:** 5/8" dia. driven aluminum rod with a 2-1/2" dia. aluminum cap and permanent magnet encased in a 6" dia. PVC pipe with an aluminum access cover.

**To Reach:** 55ft N of 220th Ave, 1/4 Mile W of "S" Ave. Approx 1/4 Mile W of the SE Corner of Sec 36, T80N, R10W.

Date Printed March 22, 2000



*This document was prepared by DCI and GBC for use by Iowa County, Iowa.*