

Iowa County, Iowa
Iowa South Zone (1402)
Horiz. Datum: NAD83(NSRS2007)
Vert. Datum: NAVD 1988
US Survey Feet
2008

Point Name: **4213**

Designation: 99-213 Iowa Co GPS Control Pt (Set by ASI in 1999)

Northing: **585539.95**sft Easting: **2066314.21**sft

Orthometric Height: **817.34**sft Ellipsoid Height: **710.98**sft **Geoid03**

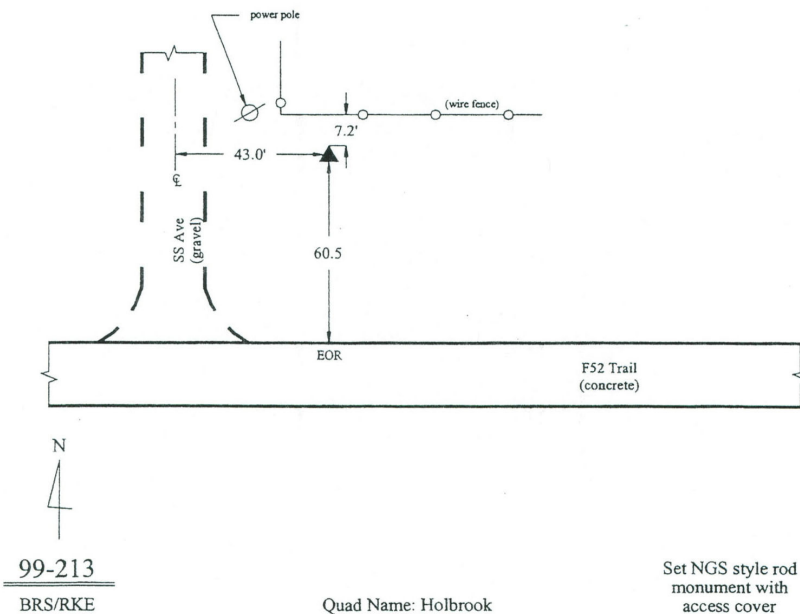
Latitude: **41°35'48.00623"N** Longitude: **91°56'34.18027"W**

Mapping Angle: **1°01'33"** Combination Scale Factor: **0.99993826**

Monument Type: 5/8" dia. driven aluminum rod with a 2-1/2" dia. aluminum cap and permanent magnet encased in a 6" dia. PVC pipe with an aluminum access cover.

To Reach: 45ft E of "SS" Ave and 75ft N of F52 Trail. In the NW 1/4 of Section 6, T78N, R9W.

Date Printed March 22, 2000



This document was prepared by DCI and GBC for use by Iowa County, Iowa.