

Iowa County, Iowa  
Iowa South Zone (1402)  
Horiz. Datum: NAD83(NSRS2007)  
Vert. Datum: NAVD 1988  
US Survey Feet  
**2008**

Point Name: **4214**

**Designation:** 99-214 Iowa Co GPS Control Pt (Set by ASI in 1999)

Northing: **587212.66sft**    Easting: **2032708.25sft**

Orthometric Height: **801.12sft**    Ellipsoid Height: **695.09sft**    **Geoid03**

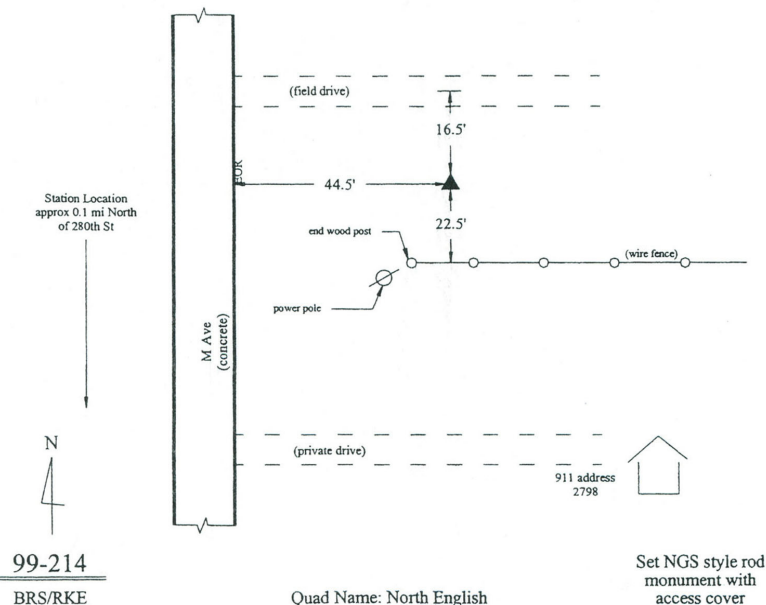
Latitude: **41°36'10.23920"N**    Longitude: **92°03'56.06761"W**

Mapping Angle: **0°56'41"**    Combination Scale Factor: **0.99993977**

**Monument Type:** 5/8" dia. driven aluminum rod with a 2-1/2" dia. aluminum cap and permanent magnet encased in a 6" dia. PVC pipe with an aluminum access cover.

**To Reach:** 55ft E of "M" Ave. approx 800ft N of 280th St. Approx 800ft N of the SW Corner of Sec 31, T79N, R10W.

Date Printed March 22, 2000



*This document was prepared by DCI and GBC for use by Iowa County, Iowa.*