

Iowa County, Iowa
Iowa South Zone (1402)
Horiz. Datum: NAD83(NSRS2007)
Vert. Datum: NAVD 1988
US Survey Feet
2008

Point Name: **4215**

Designation: 99-215 Iowa Co GPS Control Pt (Set by ASI in 1999)

Northing: **591169.83**sft Easting: **2000597.56**sft

Orthometric Height: **838.54**sft Ellipsoid Height: **732.87**sft **Geoid03**

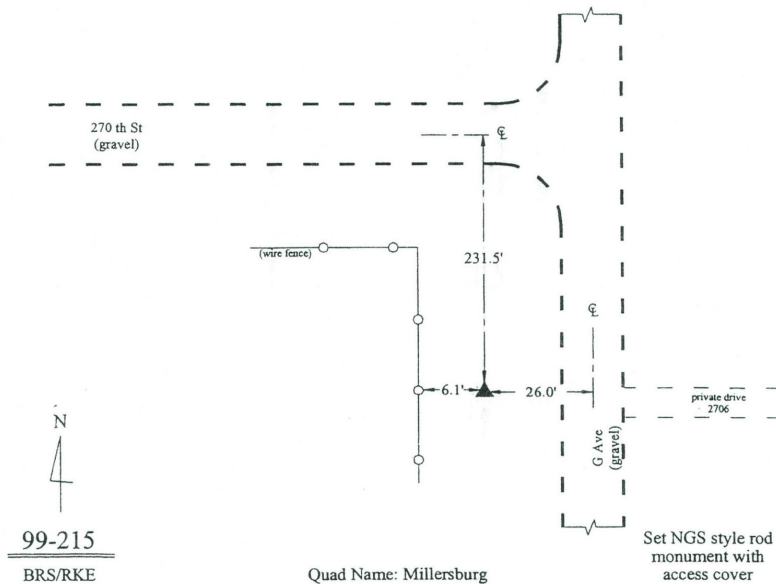
Latitude: **41°36'54.34837"N** Longitude: **92°10'57.90064"W**

Mapping Angle: **0°52'04"** Combination Scale Factor: **0.99993949**

Monument Type: 5/8" dia. driven aluminum rod with a 2-1/2" dia. aluminum cap and permanent magnet encased in a 6" dia. PVC pipe with an aluminum access cover.

To Reach: 25ft W of "G" Ave and 300ft S of 270th St approx 300ft S of the NE Corner of Sec 36, T79N, R12W.

Date Printed March 22, 2000



This document was prepared by DCI and GBC for use by Iowa County, Iowa.