

Iowa County, Iowa
Iowa South Zone (1402)
Horiz. Datum: NAD83(NSRS2007)
Vert. Datum: NAVD 1988
US Survey Feet
2008

Point Name: **4220**

Designation: 99-220 Iowa Co GPS Control Pt (Set by ASI in 1999)

Northing: **660473.74sft** Easting: **2031915.14sft**

Orthometric Height: **744.24sft** Ellipsoid Height: **639.16sft** **Geoid03**

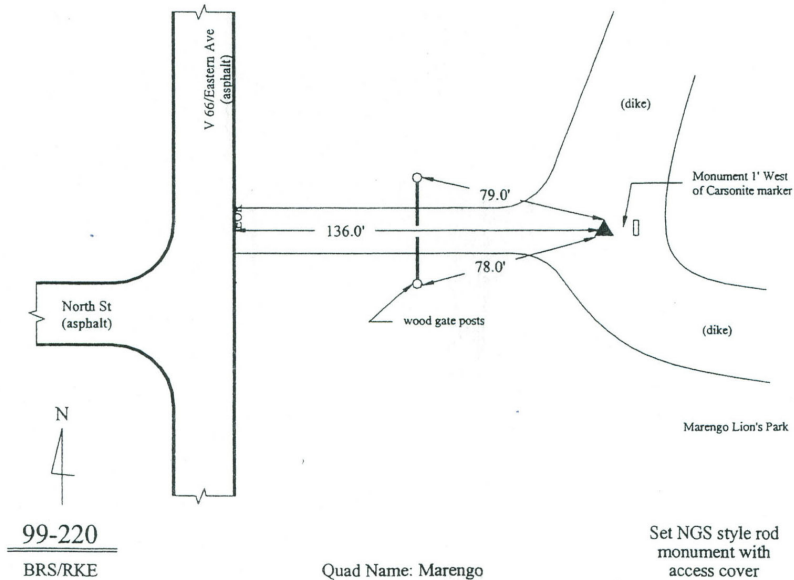
Latitude: **41°48'14.05577"N** Longitude: **92°03'50.58706"W**

Mapping Angle: **0°56'45"** Combination Scale Factor: **0.99997322**

Monument Type: 5/8" dia. driven aluminum rod with a 2-1/2" dia. aluminum cap and permanent magnet encased in a 6" dia. PVC pipe with an aluminum access cover.

To Reach: At the intersection of the North edge of North St. at the centerline of drive E of V66 near the NW Corner of Sec 30 T81N R10W.

Date Printed March 22, 2000



This document was prepared by DCI and GBC for use by Iowa County, Iowa.