

Iowa County, Iowa
 Iowa South Zone (1402)
 Horiz. Datum: NAD83(NSRS2007)
 Vert. Datum: NAVD 1988
 US Survey Feet
2008

Point Name: **4224**

Designation: 2008-224 Iowa Co GPS Control Pt

Northing: **665148.61**sft Easting: **1967915.25**sft

Orthometric Height: **847.25**sft Ellipsoid Height: **742.67**sft **Geoid03**

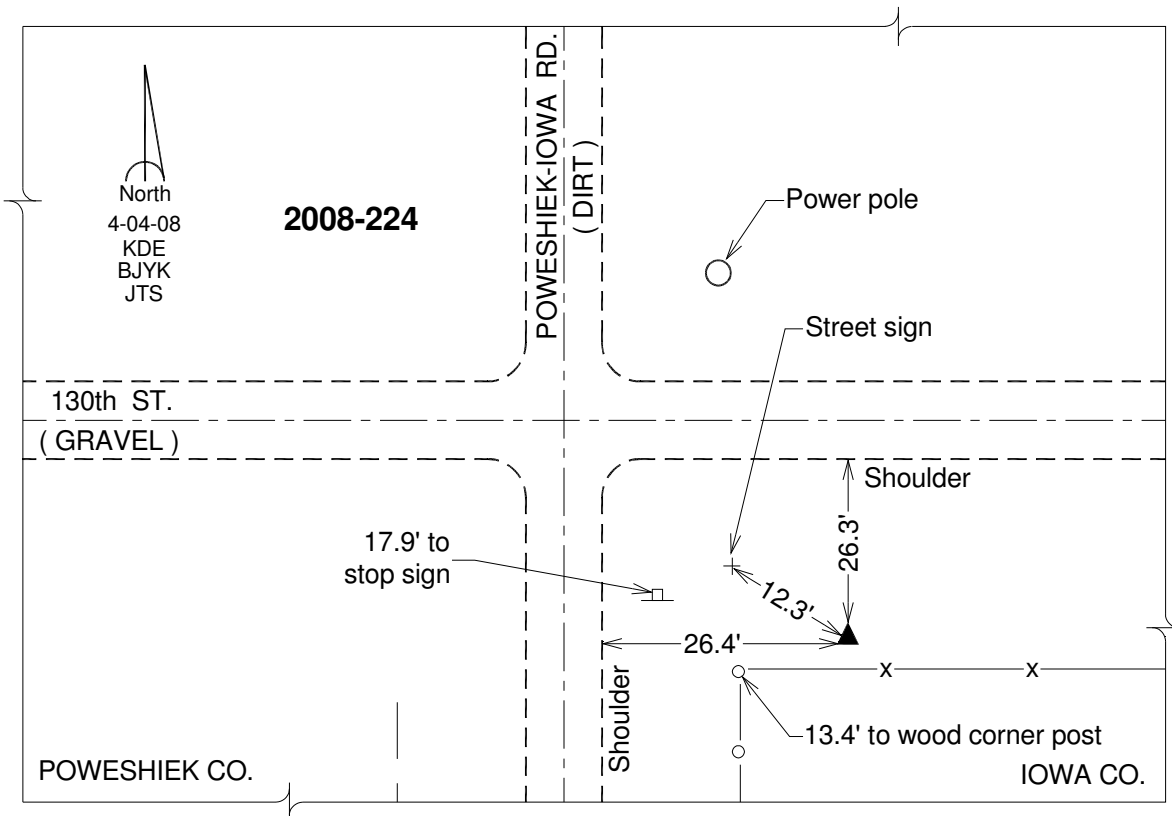
Latitude: **41°49'09.81957"N**

Longitude: **92°17'54.68202"W**

Mapping Angle: **0°47'29"**

Combination Scale Factor: **0.99997117**

Monument Type: Berntsen 3/4" Top Security Rod Monument with a 2-1/2" dia. domed survey cap and permanent magnet encased in a white PVC pipe with a NGS style alum. access cover.



This document was prepared by DCI and GBC for use by Iowa County, Iowa.