

Iowa County, Iowa
Iowa South Zone (1402)
Horiz. Datum: NAD83(NSRS2007)
Vert. Datum: NAVD 1988
US Survey Feet
2008

Point Name: **4225**

Designation: 2008-225 Iowa Co GPS Control Pt

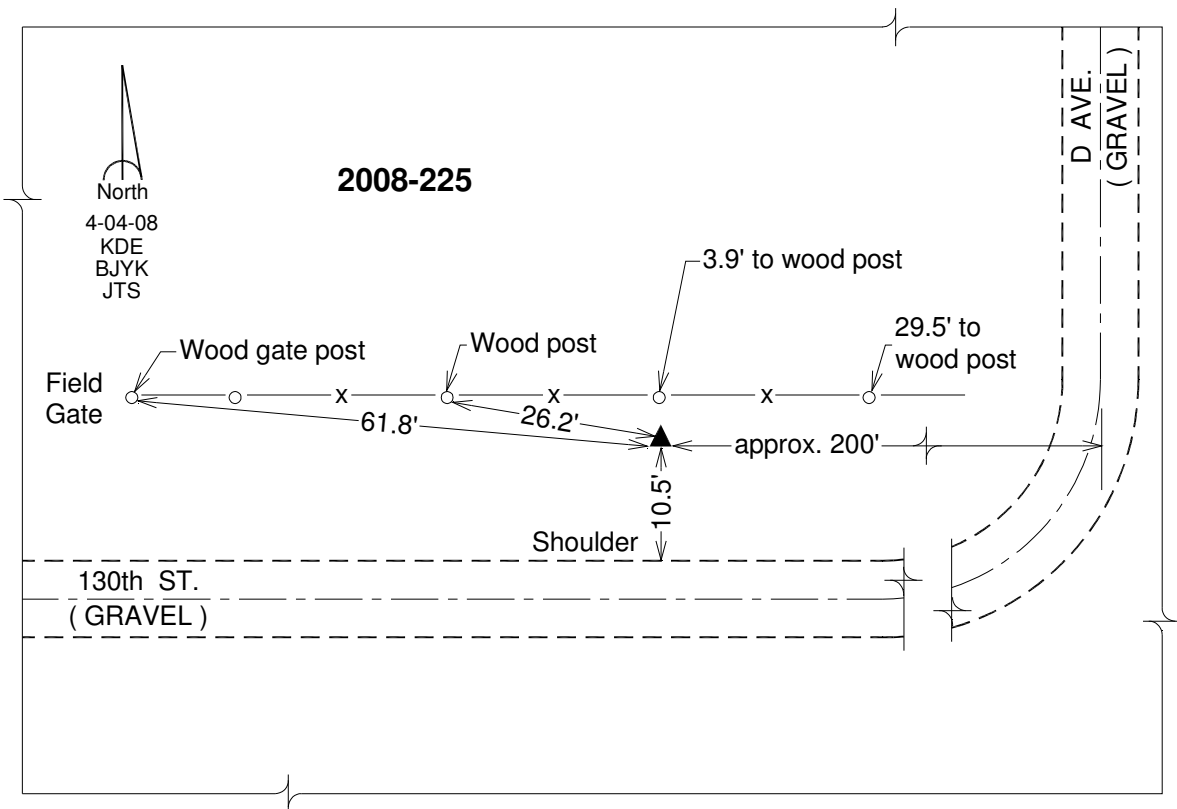
Northing: **665300.75**sft Easting: **1983697.82**sft

Orthometric Height: **908.83**sft Ellipsoid Height: **804.22**sft **Geoid03**

Latitude: **41°49'09.11691"N** Longitude: **92°14'26.23888"W**

Mapping Angle: **0°49'46"** Combination Scale Factor: **0.99996819**

Monument Type: Berntsen 3/4" Top Security Rod Monument with a 2-1/2" dia. domed survey cap and permanent magnet encased in a white PVC pipe with a NGS style alum. access cover.



This document was prepared by DCI and GBC for use by Iowa County, Iowa.