

Iowa County, Iowa  
Iowa South Zone (1402)  
Horiz. Datum: NAD83(NSRS2007)  
Vert. Datum: NAVD 1988  
US Survey Feet  
2008

Point Name: **4229**

**Designation:** 2008-229 Iowa Co GPS Control Pt

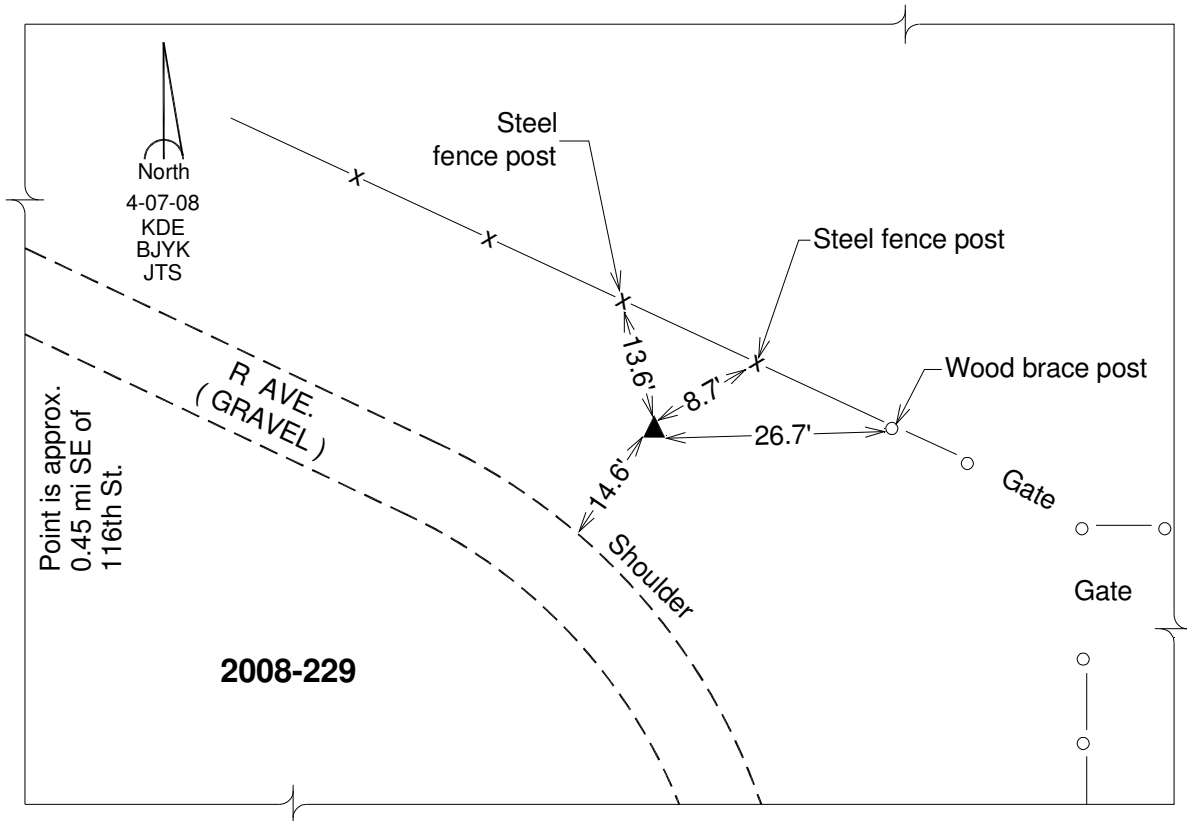
Northing: **671350.23**sft    Easting: **2059254.78**sft

Orthometric Height: **909.02**sft    Ellipsoid Height: **803.86**sft    **Geoid03**

Latitude: **41°49'56.87535"N**    Longitude: **91°57'47.12514"W**

Mapping Angle: **1°00'45"**    Combination Scale Factor: **0.99997074**

**Monument Type:** Berntsen 3/4" Top Security Rod Monument with a 2-1/2" dia. domed survey cap and permanent magnet encased in a white PVC pipe with a NGS style alum. access cover.



*This document was prepared by DCI and GBC for use by Iowa County, Iowa.*