

Iowa County, Iowa
Iowa South Zone (1402)
Horiz. Datum: NAD83(NSRS2007)
Vert. Datum: NAVD 1988
US Survey Feet
2008

Point Name: **4231**

Designation: 2008-231 Iowa Co GPS Control Pt

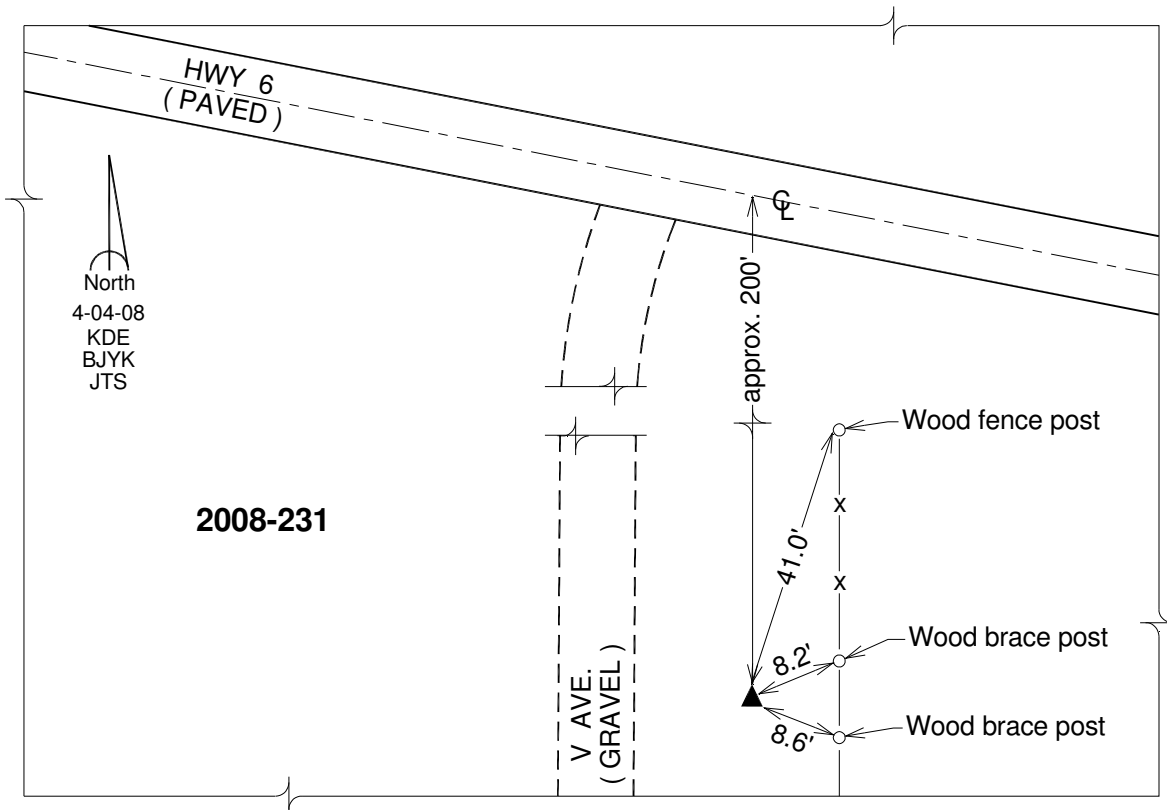
Northing: **646814.42sft** Easting: **2079786.88sft**

Orthometric Height: **806.48sft** Ellipsoid Height: **700.68sft** **Geoid03**

Latitude: **41°45'50.85050"N** Longitude: **91°53'21.95614"W**

Mapping Angle: **1°03'39"** Combination Scale Factor: **0.99996321**

Monument Type: Berntsen 3/4" Top Security Rod Monument with a 2-1/2" dia. domed survey cap and permanent magnet encased in a white PVC pipe with a NGS style alum. access cover.



This document was prepared by DCI and GBC for use by Iowa County, Iowa.